

# Northern Kentucky Area Development District



Statewide Transportation Planning

## REGIONAL TRANSPORTATION ASSET INVENTORY

FY 2025



THIS DOCUMENT WAS PREPARED IN COOPERATION WITH THE KENTUCKY TRANSPORTATION CABINET

# TABLE OF CONTENTS

## 1. Introduction

1.1 History of Program .....	1-1
1.2 Map of ADD, HDO, MPO Boundaries.....	1-4
1.3 Purpose of Regional Transportation Asset Inventory .....	1-5

## 2. Development, Strategic Highway Investment Formula for Tomorrow

2.1 Introduction.....	2-1
2.2 How SHIFT Works.....	2-2
2.3 SHIFT Projects and Map .....	2-3

## 3. Major Traffic Generator/Major Freight User

3.1 Introduction.....	3-1
3.2 Maps of Major Freight Users.....	3-3

## 4. NHS Intermodal Connector Review

4.1 Introduction.....	4-1
4.2 Maps of NHS with Major Intermodal Terminals.....	4-2

## 5. Truck Parking Inventory

5.1 Introduction.....	5-1
5.2 Map of Truck Parking Facilities by Type .....	5-2

## 6. List of Rail Yards

6.1 Introduction.....	6-1
6.2 Map of Rail Yard Locations .....	6-3

## 7. Bicycle Pedestrian Assets

7.1 Introduction.....	7-1
7.2 Bicycle and Pedestrian Facilities .....	7-2

## 8. Scenic Byways Inventory

8.1 Introduction.....	8-1
8.2 Location Map.....	8-2

## 9. Transportation Terms and Acronyms

9.1 Glossary of Commonly Used Terms.....	9-1
--	-----

## **CHAPTER 1 : INTRODUCTION**

### **1.1 History of Program**

Kentucky has maintained a statewide transportation planning process since the 1970s through the 15 Area Development Districts (ADDs). In 1995 Kentucky expanded and formalized a public involvement process for the statewide transportation planning process in response to the directives of the Intermodal Transportation Efficiency Act of 1991 (ISTEA). ISTEA and its successor, The Transportation Equity Act for the 21<sup>st</sup> Century (TEA-21) enacted in 1998, set the policy directions for more comprehensive public participation in federal and state transportation decision-making. The Safe, Accountable, Flexible and Efficient Transportation Equity Act: A Legacy for Users (SAFETEA-LU) passed in 2005. SAFETEA-LU addressed challenges such as improving safety and reducing traffic congestion, improving efficiency in freight movement, increasing intermodal connectivity, and protecting the environment. Moving Ahead for Progress in the 21<sup>st</sup> Century Act (MAP-21) passed in 2012. MAP-21 built on and refined many of the highway, transit, bike, and pedestrian programs and policies established in the previous bills. The Fixing America's Surface Transportation Act (FAST Act) passed in 2015. The FAST Act maintains a focus on safety, continued the established structure of the various highway-related programs, and focused on efforts to streamline project delivery. It also provided, for the first time, a dedicated source of federal dollars for freight projects. On November 15, 2021, the infrastructure Investment and Jobs Act ((IIJA0(Public Law 117-58, also known as the "Bipartisan Infrastructure Law") was signed into law. The IIJA builds on previous legislation related to transportation planning, created more than a dozen new highway programs, and provides more opportunities for local government and non-traditional entities to access funding.

There are critical components of each piece of legislation that require input at the early stages of the planning process from local government, communities, interest groups, regional governments and citizens. Among the most essential provisions are the following:

- Federal reliance on the statewide transportation process, established under ISTEA, as the primary mechanism for cooperative transportation decision making
- Coordination of statewide planning with metropolitan planning
- Opportunity for public involvement provided throughout the planning process
- Emphasis on fiscal constraint and public involvement in the development of a three year Statewide Transportation Improvement Program (STIP)
- Emphasis on involving and considering the concerns of Tribal governments in planning
- State development of statewide transportation plans and programs

The Kentucky Transportation Cabinet's (KYTC) statewide transportation planning process is accomplished through a cooperative program with the KYTC Central Planning Office, the 12

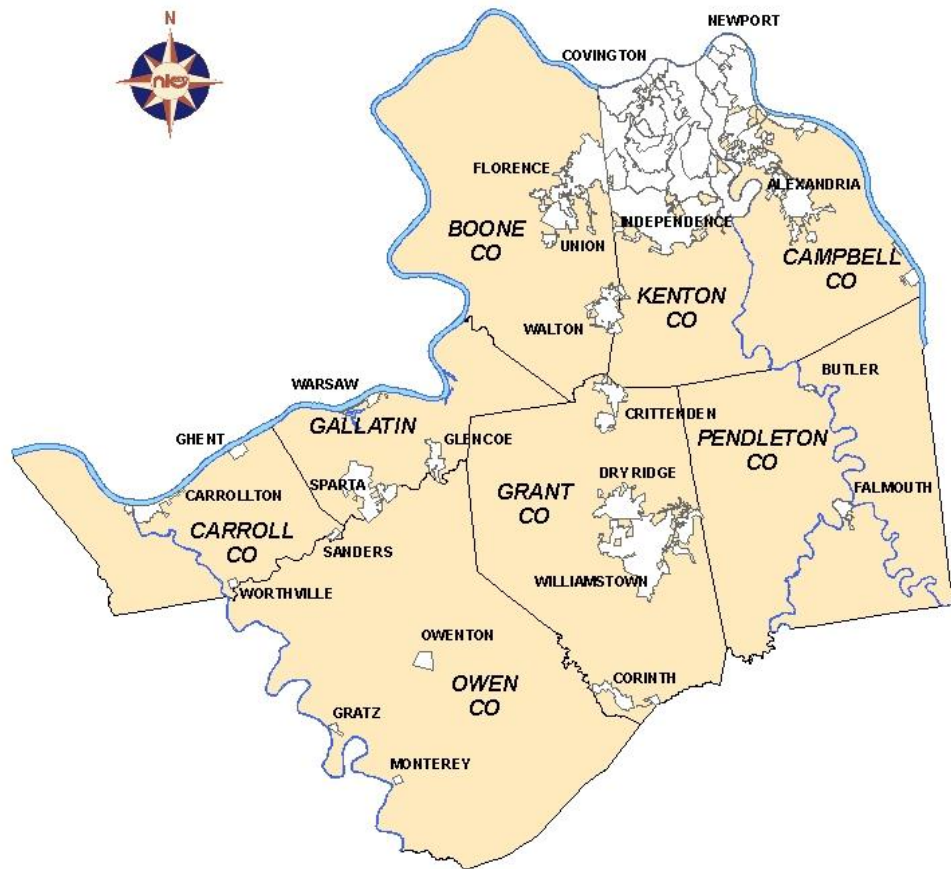
Highway District Offices (HDOs), 15 ADDs, and 10 Metropolitan Planning Organizations (MPO). The ADDs and MPOs are responsible mainly for the analysis of data and transportation systems, identification and evaluation of needs in their planning area, the coordination of public input for the STIP, and the subsequent evaluation and prioritizing of identified needs during the SHIFT process for possible inclusion into the KYTC Highway Plan.

KYTC Policies and Procedures for the Regional Transportation Program outlines the policies and guidelines for the program within and in relation to the designated ADD of the Commonwealth of Kentucky. State Legislation was enacted in 1972 creating the ADDs by law in Chapter 147A of the Kentucky Revised Statutes (KRS). The KYTC has historically administered major comprehensive transportation programs at the urban, metropolitan, and statewide levels. The creation of the ADD pursuant to federal legislation established an effective link for the development of a comprehensive transportation program utilizing local, regional, and statewide agencies.

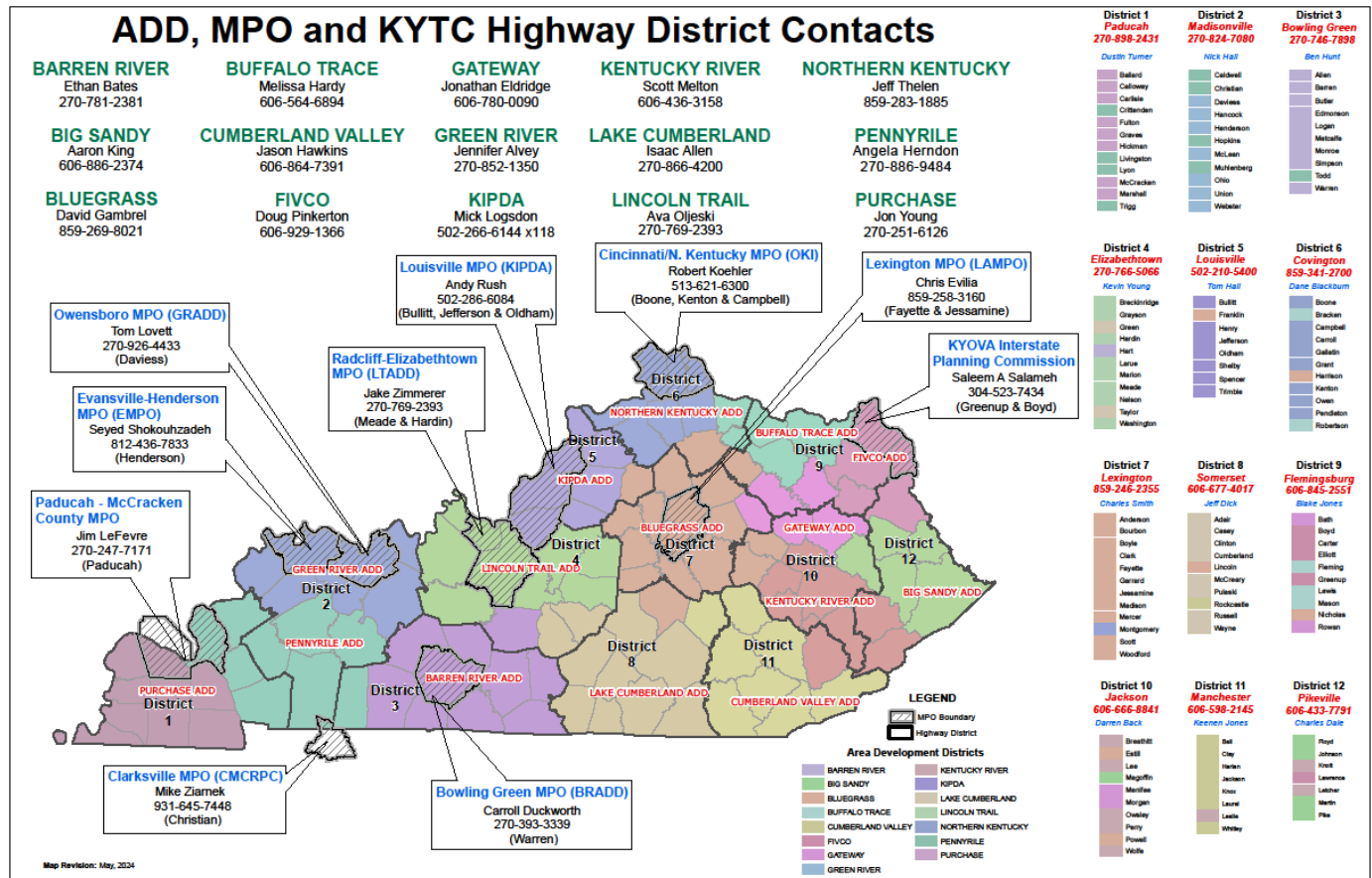
The ADD primarily conducts activities in support of transportation planning for the rural areas of the Commonwealth and our MPO partners are responsible for activities in the nine urbanized areas. The ADDs are concerned with all modes of transportation including: air, water, rail, highway, transit, pedestrian and bicycle. The jurisdiction of the regional program is not necessarily limited within the boundaries of the ADD making it necessary to include coordination between the MPO and our partners in the HDO.

The Northern Kentucky Area Development District (NKADD) is composed of the five rural counties of Carroll, Gallatin, Grant, Owen and Pendleton in the Northern Kentucky region.

## Northern Kentucky Area Development District



### 1.2 Map of ADD, MPO, HDO Boundaries



### 1.3 Purpose of the Regional Transportation Asset Inventory

The major activity conducted by the NKADD Regional Transportation Program is to support the KYTC Statewide Transportation Planning process. The KYTC provides an annual scope of work to define the regional transportation activities to be conducted by the NKADD to support the KYTC. Included in the scope of work is a specific set of resource documents identified for the Regional Transportation Concept Plan (RTCP). The RTCP is utilized as a resource document for the entire region while developing goals and objectives for the transportation system, identifying and evaluating needs, reviewing and documenting projects, and throughout the prioritization/ranking process. The RTCP is the “umbrella” that houses data collection components relevant to regional transportation. The RTCP document consists of an introduction for each component detailing the reason for, location maps and what recommendations if any can be construed from existing data and research. It is designed to be multi-modal in nature and address all forms of transportation in the region to include highways, air, river, rail, transit, pedestrian and bicycle.

The purpose is to involve local leaders, public officials, and the general public in the transportation planning process. It is designed to develop a working relationship between local leaders, transportation officials and planners, and concerned citizens, with the goal of creating an

open environment, allowing for open and informed public input, so those transportation plans receive local acceptance and support. The elements collected in the RTCP can be used as a means of generating better input from local officials and citizens concerning transportation issues and projects.

The NKADD is responsible mainly for the analysis of data, identification and evaluation of needs in their region, and the subsequent evaluation and prioritization/ranking of projects in the UNL for possible inclusion in the KYTC Six-Year Highway Plan. The NKADD's role in the statewide transportation planning process is to:

- Work with the Regional Transportation Committee (RTC) to evaluate and prioritize all transportation needs concerned with all modes of transportation in the region.
- Identification of new needs
- Prioritization/ranking of unscheduled needs
- Establish a public involvement process that will involve diverse interest groups in the statewide transportation planning process – involving all modes of transportation.
- Provide coordination with other planning activities in the region.
- Complete the various tasks described in its annual scope of work.

The role of RTC is to provide input into this regional and statewide process. The committee is comprised of a diverse group of interest that impact or are impacted by the transportation system. The committee will work with the NKADD in evaluating and prioritizing needs concerned with all modes of transportation.

Through cooperation with the NKADD, the RTC, local officials, transportation providers and users, and the general public, efforts are made to identify long-range or conceptual transportation needs resulting from the NKADD's efforts to assess the mobility and accessibility for the region. This identification process is considered an on-going activity with the NKADD RTC and the District 6 HDO following the continuous evaluation of the local and regional transportation systems.

## **CHAPTER 2 : Development of Strategic Highway Investment Formula for Tomorrow (SHIFT)**

### **2.1 Introduction**

The Strategic Highway Investment Formula for Tomorrow (SHIFT) is the Kentucky Transportation Cabinet's data-driven, objective approach to compare capital improvement projects and prioritize limited transportation funds.

SHIFT helps reduce overprogramming and provides a clear road map for construction in the coming years. The formula applies to all transportation funding that isn't prioritized by other means, such as maintenance work, local government projects and dedicated federal projects.

SHIFT allows policy makers to see just how far down the priority list our limited dollars will go and which other projects could be funded if additional dollars were generated. This collaborative model uses measurable data to assess the need for and benefits of planned projects and compare them to each other. Projects are scored based on these seven key attributes: Safety, Economic Growth, Congestion, Benefit Cost, Asset Management, Resiliency and Non-Motorized Mobility

#### Development, Evaluation & Maintenance

Suggested needs that have been proposed or identified are reviewed for necessity through field visits, analysis of Adequacy Ratings and other data sources as provided by the KYTC for analytical purposes. If deemed appropriate, a PIF shall be developed in partnership by the ADD and HDO planners. KYTC's Division of Planning (DOP) is consulted prior to final inclusion in the SHIFT process. All information is housed in the KYTC Online PIF application. The ADD and HDO are responsible for maintaining all information in the application. Additionally, the ADD and HDO are responsible for the quality, clarity, and completeness of needs specific to their boundaries. DOP coordinates and oversees the PIF application. The needs identified from this process are recorded in the CHAF database until all project phases are advanced into the KYTC Six-Year Highway Plan with full funding, are completed through other means, or are voted out for lack of RTC and HDO support. The highway plan is the KYTC's programming document submitted to and approved by the Kentucky General Assembly every two years.

The ADD reviews all SHIFT items in relation to other identified needs or projects in the KYTC CHAF database and if necessary, make revisions to project descriptions, termini, mile-points, or other information as may be required. Special attention is given to adequately describing the issue to be addressed in the project description, citing the available data to help document the need. Projects which are not data driven, do not appear to have a definite purpose or need and a history of low priorities are considered for removal from the active CHAF database. If a fully documented need cannot be determined, the ADD in conjunction with the HDO and with concurrence of the RTC can recommend the need be moved to "Inactive" status.

#### Prioritization



In FY 2017 the KYTC introduced a new concept for prioritization of projects being considered for implementation into the proposed highway plan. A model was developed to create a more data-driven, objective and collaborative approach to selecting high priority projects. This model is called the Strategic Highway Investment Formula for Tomorrow (SHIFT). SHIFT uses quantitative data – measures such as crashes, fatalities, traffic volumes, delays, employment – to assess the benefits of planned projects and compare them to each other. Using the SHIFT formula (developed by transportation engineers) KYTC will score projects and share rankings with local transportation leaders (ADDs, MPOs, and HDOs). KYTC ranks projects with statewide importance and through the local collaboration, priorities are set for regional projects.

The guidelines and schedule for the prioritization and ranking process are established by the DOP. General needs are prioritized on a local (respective county/city), regional (ADD), HDO and state (DOP) level. The ADD is responsible for obtaining the local and regional priorities. The prioritization process is documented by the ADD and reported to the KYTC. The documentation report is a record of the public involvement process utilized to prioritize the projects in the CHAF database, including all efforts to educate/inform the RTC and the public and any methods used to build consensus for priorities and rankings.

For a project to be considered, it first must be included on the sponsorship list. The projects that are sponsored at the regional (ADD) and HDO level are submitted to KYTC for scoring in the SHIFT formula. KYTC determines the number of projects that can be sponsored by using a formula that includes the number of counties, population and lane miles in a region and HDO. Once projects have been scored and the statewide selection process completed, regional lists are developed from projects not selected at the state level. The regional lists are reviewed by the ADD RTC and HDO. Both can select 25% of the projects to apply boost points to the scores, creating the regional and HDO priority lists. These projects are considered in the development of the recommended highway plan provided to the governor and ultimately presented to the General Assembly for approval.

## **2.2 How SHIFT Works**

KYTC starts with a list of projects previously identified by state and local transportation leaders (Area Development Districts, Metropolitan Planning Organizations, and KYTC Highway Districts). These leaders may add or subtract projects at this stage. To move forward, projects must be “sponsored” by local transportation leaders. Each ADD, MPO, and Highway District are allocated a number of “sponsorships” based on both area lane miles and the local population served. After consulting with local elected officials, transportation leaders choose which projects to sponsor. Each project is reviewed and scored in a two-step system: statewide and local. Statewide scoring is on a 0-to-100 point scale and local scoring is on a 0-to-80 point scale. Through a process known as “boosting” (discussed below), local projects can obtain a maximum score of 100. Both phases are scored using a combination of the seven key attributes: safety, congestion, asset management, economic growth, benefit/cost, resiliency, and non-motorized mobility. Projects of statewide significance (interstates, parkways, and other major connecting routes) are scored first. KYTC reviews the scores of the projects of statewide significance and selects projects for priority funding. The remaining statewide projects are considered during the

next phase. Local transportation leaders take the lead role in prioritizing local priorities, which include highways and local roads as well as the remaining statewide projects. Using local insights, ADDs, MPOs, and Highway Districts may “boost” the scores of their top priority projects, adding 10 points to their base scores on the 0-to-80 point scale. Projects boosted by both the District and ADD/MPO receive an additional 20 points – a “turbo boost”. After combining the project scores with the local boosts, projects in each KYTC District are prioritized for consideration in the next state highway plan. KYTC combines statewide and local priorities to help develop the Governor’s Recommended State Highway Plan, which is presented to the General Assembly. During the legislative session, lawmakers fine-tune the plan based on additional information and funding availability. The result is the Enacted State Highway Plan, which includes two years of funded projects and spending priorities for the following four years.

## **2.3 SHIFT Listing**

The SHIFT listing is the unconstrained list of all potential needs or deficiencies identified or suggested for consideration for future implementation. These projects represent identified needs that may or may not have data supported deficiencies for which conceptual projects may have been developed, but for which there are no current funding commitments.

The SHIFT listing is divided into three categories, base list, active list and inactive list. Base list needs are the needs reviewed during the prioritization process. Active list needs are followed and monitored closely, but do not have a priority or rank placed on it. It is possible, as needs change or new needs are identified, to move from the active list to the base list for the purpose of prioritizing and ranking. A need on the inactive list is one that historically had a low priority or no longer is considered a need. These needs are no longer monitored, but they are not deleted from the database in case the respective need once again becomes valid. If determined to be a valid need, then there can be movement from the inactive list to the active or base list.

The following is a list of the NKADD SHIFT project listed by county that are recorded on the base and active list:

### **Carroll County SHIFT Projects**

US 42 – Drainage improvements a Prestonville  
KY 36 – Spot improvements along KY 36 at intersections of Commanche Ln and 36 and Boone Rd and 36  
KY 36 – Reconstruction of intersection at KY 1492  
KY 36 – Reconstruction of 36 from Four Mile to 1204  
KY 36 – Reconstruction from KY 227 to Four Mile Rd  
KY55 - Reconstruction of KY 55 from KY 389 to US 42  
KY 55 – Reconstruction of 55 from Trimble Co line to KY 389  
KY 389 – Reconstruction of intersection of 389 at Greenbottom Rd  
KY 467 – Reconstruction 0.5 easterly from KY 227 with curb, gutter and sidewalks  
US 42 – Widen to 3 lanes from western Ghent city limit to the new I-71 connector  
I-71 – Add truck climbing lanes on I 71

KY 47 – Reconstruction of 47 from KY 184 to US 42  
I-71 – New interchange at KY 47 near the Gallatin County line  
KY 389 – Reconstruction of 389 from I-71 to KY 55  
KY 36 – Reconstruction of 36 from Milton to US 42 at Carrollton  
KY 1112 – Reconstruction of 1112 from KY 227 to KY 36  
KY 227 – Reconstruction of 227 from I-71 to KY 36  
US 42 – Spot improvements Ghent to Gallatin County line  
US 36 – Reconstruction of 36 from Milton to Carrollton  
US 42 – Reconstruction from Ky River Bridge to KY 320  
US 42 – Bypass Improve connectivity & mobility to KY 227 on east side of Carrollton  
I-71 – Widen 71 to 6 lanes from 227 to 1039 in Gallatin County  
I-71 – Widen 71 over Ky227/Kentucky River

### **Gallatin County SHIFT Projects**

US 42 – Provide turning lanes into Gallatin Steel  
US 42 – Reconstruction from Knox Lillard Rd to 5<sup>th</sup> st in Warsaw  
US 42 – Reconstruct from approx. 2.0 miles east of Warsaw to US 127  
US 42 – Upgrade US 42 from Carroll Co lint to Ky 1039  
US 42 – Improve Safety on US 42 from Payne Ave to Dorman Dr  
KY 467 – Reconstruction of 467 from US 127 to Grant County line  
I-71 – Construct interchange at Ky 562  
I-71 – Construct interchange at KY 455  
US 127 – Reconstruct US 127 from Owen County line to KY 16  
US 42 – Reconstruct US 42 from the intersection of US 127 to the Boone County line  
US 127 – Reconstruct US 127 from I-71 to US 42  
KY 467 – Reconstruct 467 from KY 35 to US 127  
KY 467 – Improve existing grade to raise out of flood plain at railroad crossing  
KY 1992 – Extend Ky 1992 to Southfork Rd  
US 42 – Reconstruct US 42 between Markland Dam and Craigs Creek  
US 127 – Reconstruct 127 from KY 16 to I-71  
KY 467 – Reconstruct 467 from Carroll County line to KY 35  
I-71 – Reconstruct I-71 with additional lanes from Little Sugar Rd overpass to north of KY 14  
I-71 – Reconstruct 71 from mp 62.8 to mp 64  
KY 35 – Reconstruct 35 from Kentucky Speedway blvd to US 42  
I-71 – Reconstruct I-71 from the end of the 6-lane typical section to Little Sugar Rd Overpass  
US 42 – Upgrade US 42 from KY 35 through Warsaw to Middleton Rd  
I-71 – Widen 71 frp, Ky35 to US 127

### **Grant County SHIFT Projects**

US 25 – Reconstruct 25 from KY 36 to KY 22  
 KY 22 – Reconstruct 22 from KY 1993 to Baton Rouge Rd  
 KY 22 – Reconstruct 22 from Baton Rouge Rd to KY 467  
 KY 22 – provide connectivity from US 25 to KY 489  
 KY 1994 – Reconstruction of 1994 from I-75 to US 25  
 KY 330 – Improve safety on 330 from 607 to UU 25  
 I-75 – Construct Interchange on I-75 at Sherman  
 US 25 – Updating US 25 from south of KY 1994 to south of KY 491  
 US 25 – Reconstruct Baton Rouge Rd from I75 to US25  
 KY 36 – Reconstruct 36 from KY 22 to Ky 1995  
 KY 36 – Road improvements from I-75 to Heekin Clarks Rd  
 KY 36 – Reconstruct 36 from KY 22 at four corners to KY 1995  
 KY 467 – Reconstruct 467 from Clarks Creek Rd to Osborne Rd  
 New Route – Construct new route Reid Rd to Hyde Rd east of Norfolk Southern RR  
 New Route – Construct new route from east of Norfolk Southern RR to Dry Ridge RD  
 KY 36 – Reconstruct with bikeway from Owen County line to KY 22 at four corners  
 KY 491 – Reconstruct 491 from Boone County line through the I-75 interchange  
 KY 467 – Reconstruct 467 from Osborne Ln to KY 22  
 KY 36 – Reconstruct 36 from KY 330 to KY 1032 in Harrison County  
 KY 467 – Reconstruct 467 from US 25 to Pendleton County line  
 KY 2943 – Reconstruct and extend from KY 36 south to Cherry Grove Cross Rd  
 US 25 – Reconstruct 25 with bikeway from Dry Ridge By Pass to KY 1994  
 KY 36 – Reconstruct 36 from US 25 to KY 330  
 KY 491 – Reconstruct 491 from US 25 to the Pendleton County line  
 New Route – Construct new route on east side of RR from Dry Ridge By Pass to Baker Rd  
 KY 467 – Reconstruct 467 from the Gallatin County line to Clarks Creek Rd  
 US 25 – Reconstruct 25 with bikeway from from Ky 22 to end of Dry Ridge By pass  
 US 25 – New construction from east side of RR Sherman Rd to Lemon Northcutt Rd  
 KY 2363 – Improve drainage, mobility from Ky 491 to Eads Rd  
 I 75 – Provide connectivity and mobility from Ky 36 to Barnes Rd  
 CR 1142 – Replace Bridge on Delaney Rd north of junction with US 25 at RR  
 KY 467 – Reconstruct from Gallatin County line to Clarks Creek Rd  
 US 25 – Improve safety on 25 from Ky 2363 to Precision Dr. Boone County  
 KY 22 – Provide connectivity and mobility from US 25 to Baton Rouge Rd

### **Owen County SHIFT Projects**

KY 35 – Reconstruct KY 35 from US 127 to Gallatin County line  
 KY 607 – Reconstruct KY 607 to eliminate the hairpin turn at Sawridge creek  
 KY 22 – Reconstruction of KY 22 from 355 to Morgans Rd  
 KY 22 – Reconstruction of KY 22 from Morgans Rd to Hide Away Dr  
 KY 22 – Reconstruction of KY 22 from Hide Away Dr to KY 1670  
 KY 22 – Reconstruction of KY 22 from KY 1670 to US 127  
 KY 22 – Widen 22 at intersection of 845 to Grant county line

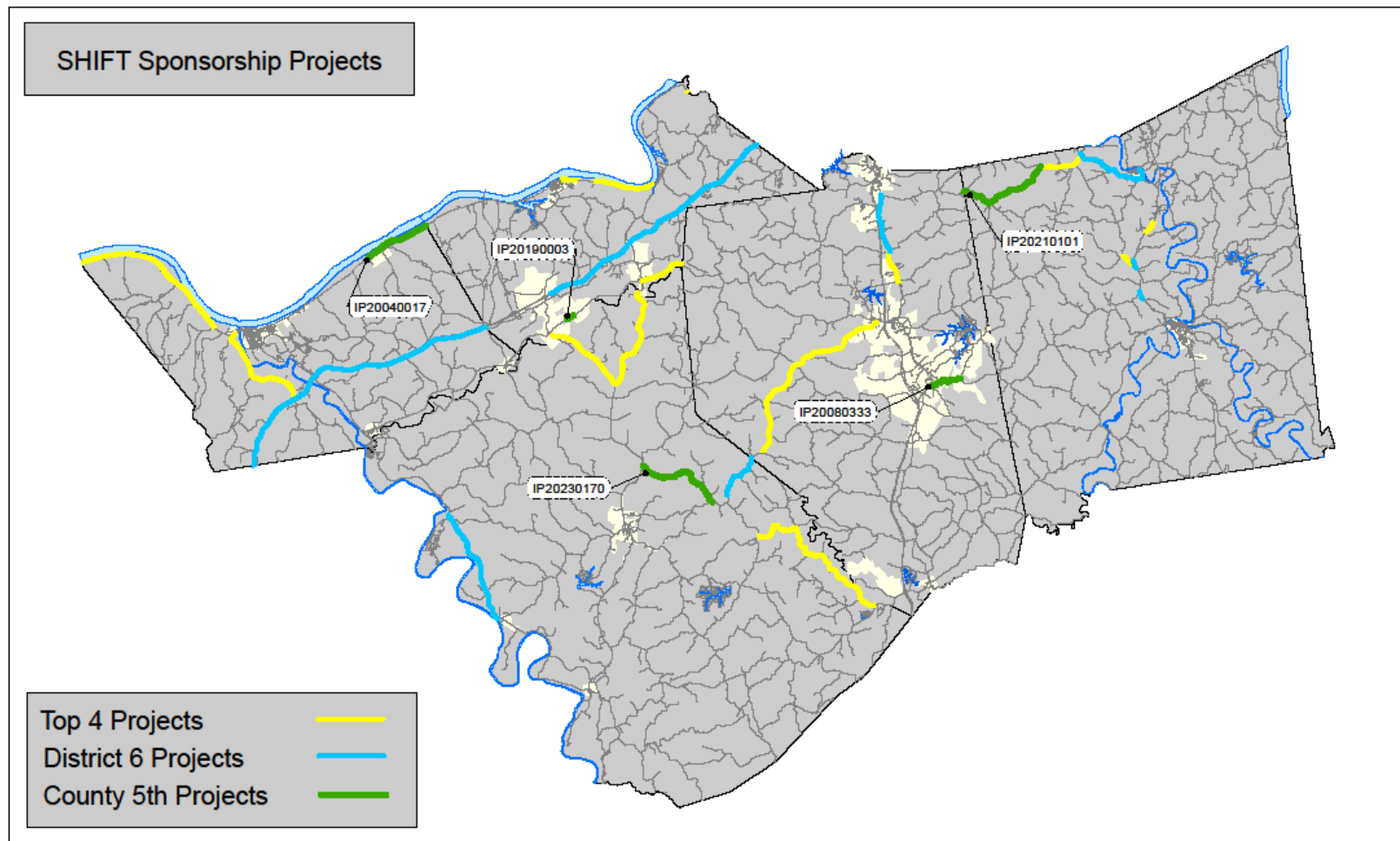
KY 845 – Reconstruct 845 from KY 330 to Ky 22  
 KY 127 – Reconstruct 127 from KY 35 to Gallatin Co line  
 KY 330 – Improve safety on 330 from Canby Ln to KY 607  
 KY 22 – Upgrade 22 from KY 227 to KY 845  
 KY 355 – Reconstruct 355 from KY 1982 to Eagle Creek Resort  
 KY 1982 – Reconstruct 1982 to current 2 lane standards from Hensley Rd to KY 22  
 KY 227 – Reconstruct 227 from KY 845 to KY 330  
 KY 355 – Reconstruct 355 from KY 22 to KY 1982 near Perry Park  
 KY 1982 – Reconstruct 1982 to current 2 lane standards from KY 355 to Hensley Rd  
 KY 227 – Reconstruct 227 from Harmony Rd to KY 607  
 KY 3549 – Reconstruct 3549 to eliminate sharp curves  
 KY 355 – Reconstruct 355 from US 127 to KY 22  
 KY 227 – Reconstruct 227 from KY 330 to KY 22  
 KY 227 – Reconstruct 227 from KY 607 to KY 845  
 KY 330 – Reconstruct 330 from Ky 845 to Canby Ln  
 KY 22 – Improve safety, mobility along 22 from Ky 355 to mile point 2.3

### **Pendleton County SHIFT Projects**

US 27 – Truck climbing lane northbound near Harrison/Pendleton County line  
 KY 159 – Reconstruct of KY 159 from Rt 22 to Kincaid Lake State Park  
 KY 9 – AA Highway construct turn lanes, horizontal realignment at New Hope Rd  
 KY 17 – Reconstruct 17 from US 27 to KY 1853  
 US 27 – Intersection improvements at KY 17  
 US 27 – Intersection improvements at KY 22  
 US 27 – Truck climbing lane on northbound 27 from Menzie Bottoms Rd  
 US 27 – Address safety and level of service on US 27 from Harrison County line to KY 22  
 US 27 – Reconstruct 27 from Falmouth to Butler  
 KY 22 – Reconstruct 22 from KY 159 to KY 539 in Bracken County  
 KY 177 – Reconstruct 177 from KY 159 to US 27  
 New Route – New route from US 27 to KY 539 near Licking River Fork Bridge  
 New Route – New route from US 27 to KY 9  
 KY 177 – Reconstruct 177 from US 27 in Butler to Kenton County line  
 KY 17 – Reconstruct 17 from KY 467 to the Kenton County line  
 KY 17 – Reconstruction of 17 from mp 3.7 to mp 5.3  
 KY 467 – Reconstruct 467 from KY 1657 to KY 17  
 KY 154 – Reconstruct 154 from KY 10 at Peach Grove to KY 8  
 KY 9 – AA Highway major widening to 4 lanes from KY 159 to 4 lane section in Campbell  
 KY 467 – Reconstruct 467 from KY 17 to KY 177  
 KY 467 – Reconstruct 467 from Grant County line to KY 1657  
 KY 159 – Reconstruct 159 from KY 609 north of Kincaid Lake to KY 10  
 KY 17 – Reconstruct 17 from KY 1853 to KY 467  
 KY 8 – Reconstruct 8 from KY 154 to KY 2828  
 KY 2828 – Reconstruct 2828 from KY 9 in Campbell County to KY 8 in Pendleton County

KY 22 – Improve safety, mobility, connectivity on 22 from Turner Ridge Rd to US 27  
KY 22 – Improve safety, mobility, connectivity on 22 from KY 154 to Turner Ridge Rd  
KY 491 – Reconstruct Ky 491 from Grant County Line to Ky 17  
KY 177 – Reconstruct Ky 177 from Licking River Bridge in Butler to Ky 3185

### **2.3 Map of the SHIFT projects in the NKADD**



**NKADD**  
**CHAPTER 3: MAJOR FREIGHT USERS INVENTORY**

**3.1 Introduction**

The Major Freight Users Inventory (MFUI) is a listing of facilities identified throughout the region known for generating significant freight movement. The list is very subjective and can be interpreted differently by the regional committee, local officials and other stakeholders for each county/region. Planners, through consultation with RTC and local officials in each county, determine the facilities for each area. Keeping the inventory current is necessary for helping promote the safe and efficient movement of goods and services throughout the county, region and state. The inventory is a valuable tool for analyzing transportation systems and data, identification and evaluation of needs in the region and the subsequent evaluation and prioritization of projects.

The inventory identifies major manufactures and distribution centers for truck and rail and intermodal facilities. MFUI can have a profound impact on the operations of the surrounding road network.

In order to understand traffic patterns and volumes in an area, it is important to know about existing MFUI and changes that have occurred such as the addition or closing of a facility. To facilitate this understanding, the ADD maintains this inventory of locations. This data can be made available to transportation planners, designers, the public, and local officials when making transportation decisions such as the highway prioritization process, or corridor improvement study, or development and calibration of traffic models.

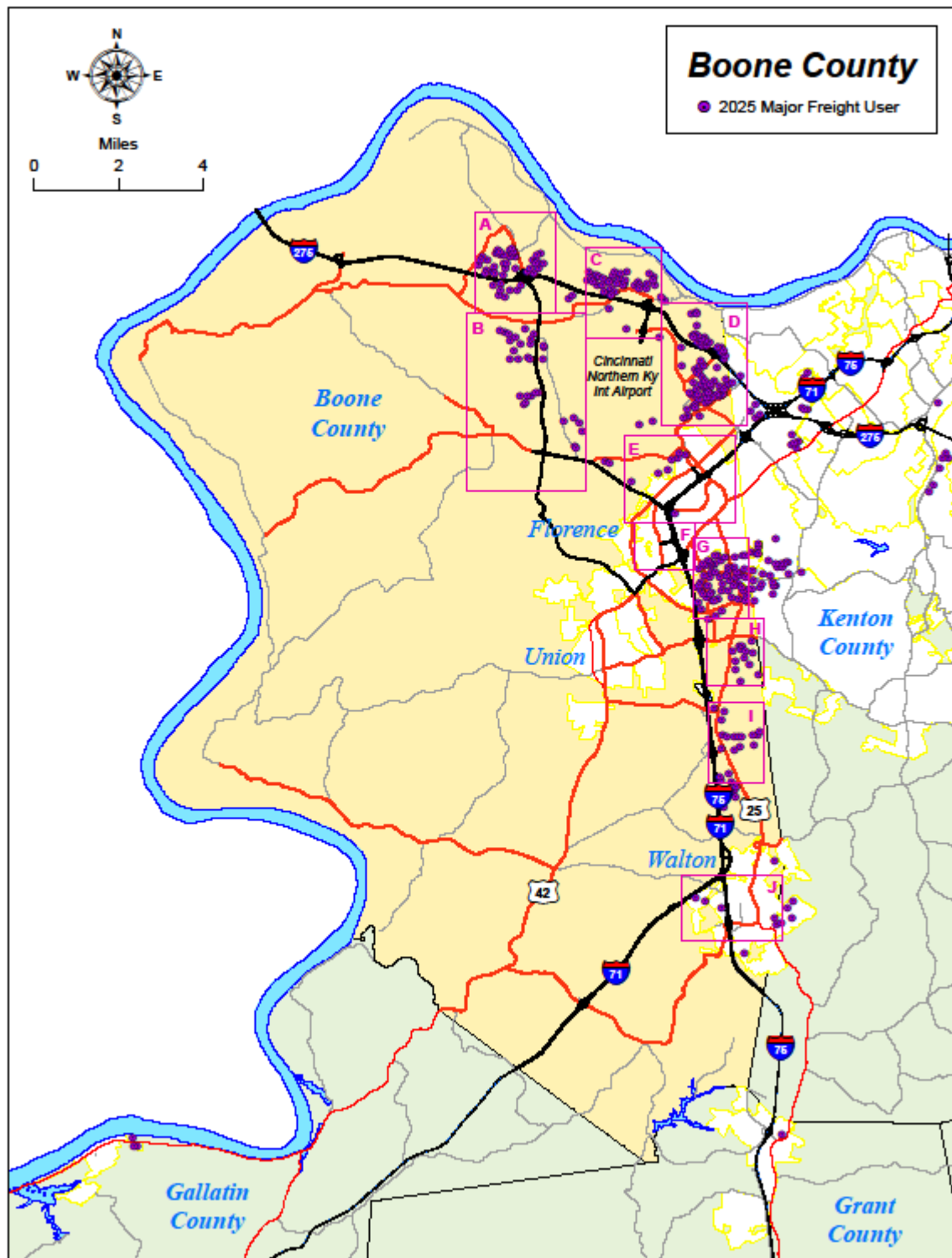
The inventory is maintained as part of a Geographic Information System (GIS) and can be displayed on maps with existing traffic data such as traffic counts, unscheduled needs list, highway plan projects, safety data, etc. This inventory is reviewed yearly with the RTC to ensure accuracy and the RTC is encouraged to inform NKADD staff of changes that have occurred in their communities such as the closing or opening of a new facility.

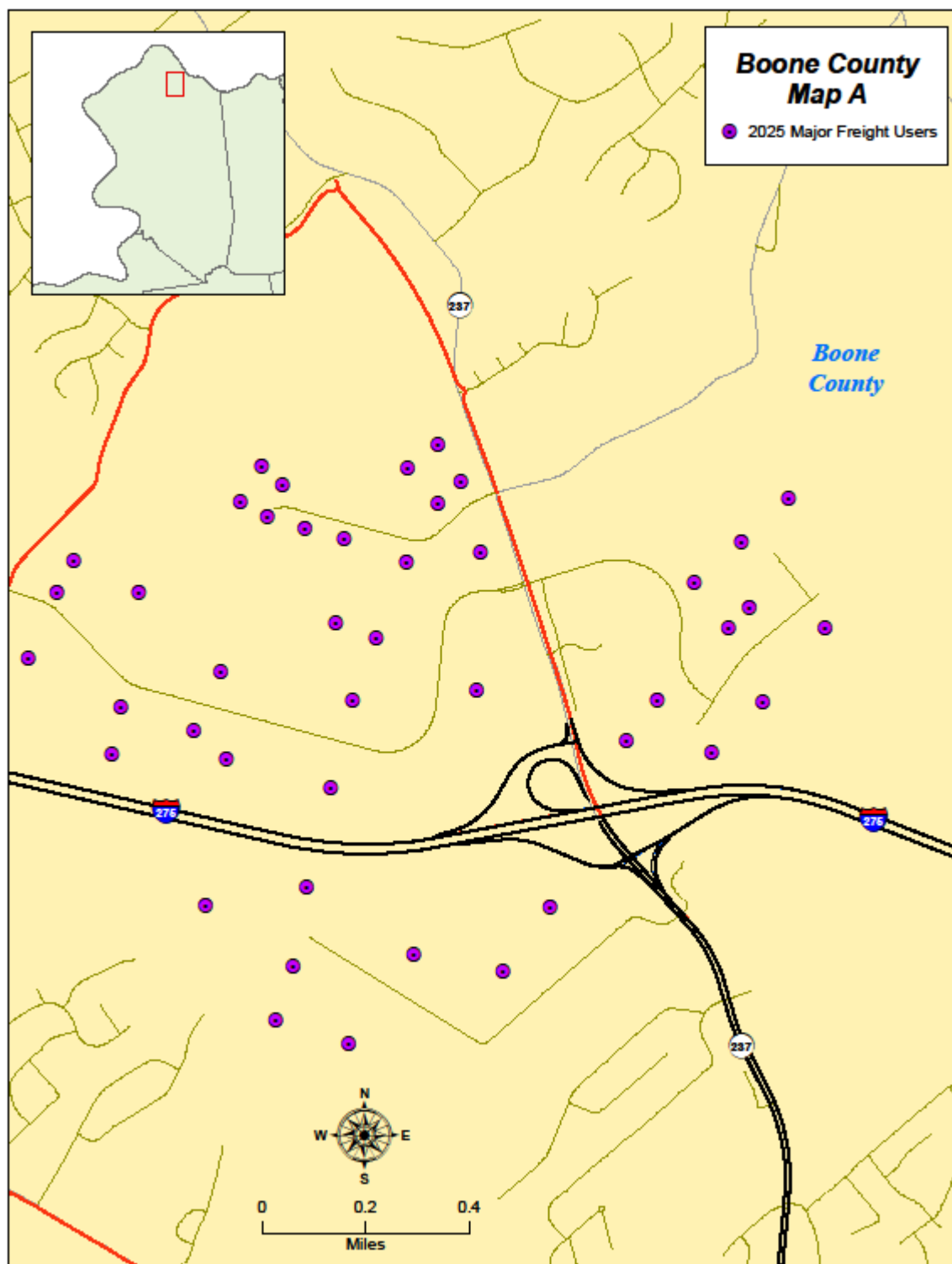
The map located in section 3.2 illustrates the location of the current NKADD MFUI. County maps, city maps and community maps are used where necessary to provide a visual tool of the inventory within the existing road network. Updates or other changes are submitted each year to the KYTC. For more information on the NKADD MFUI, please contact the ADD.

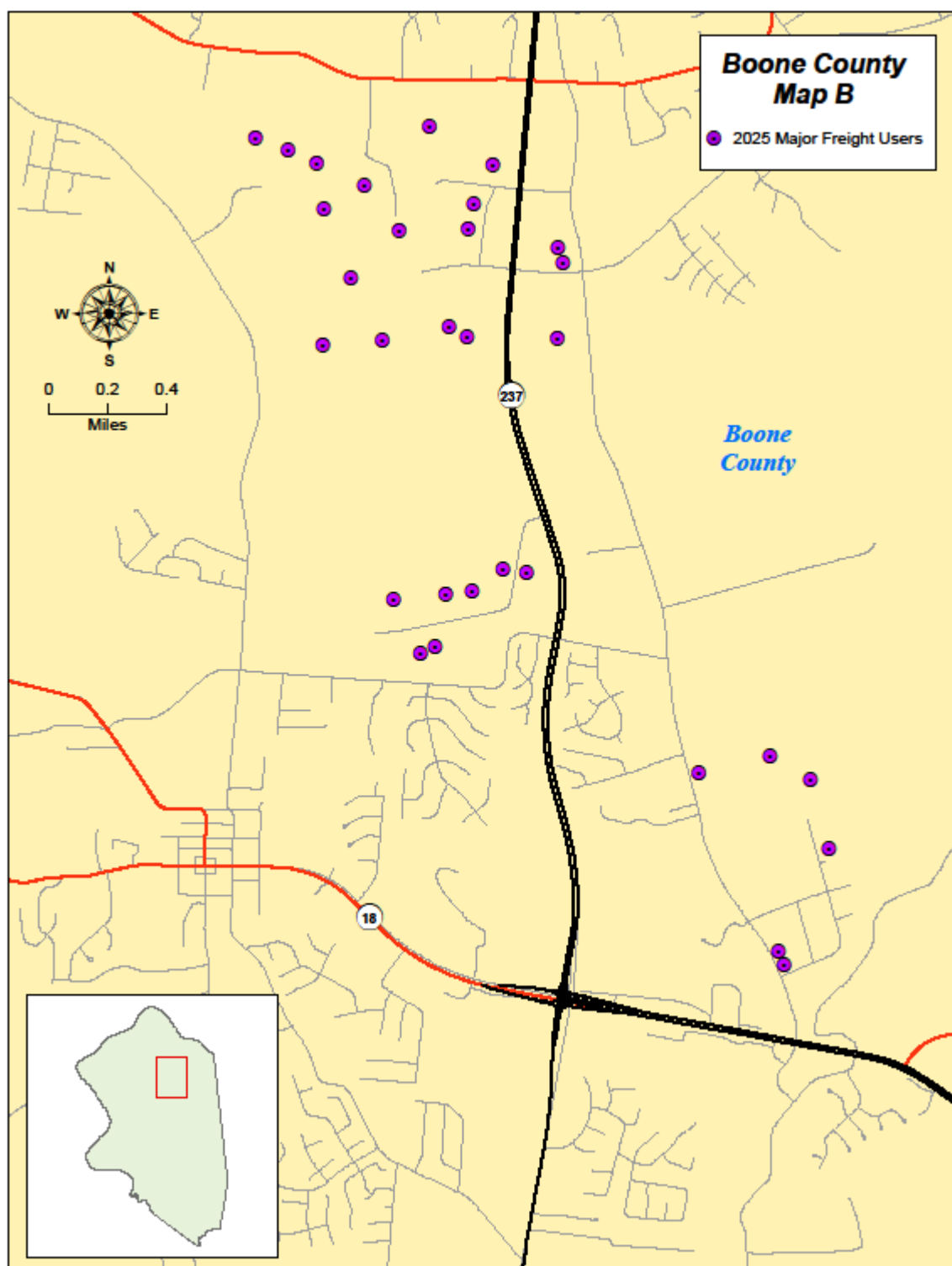


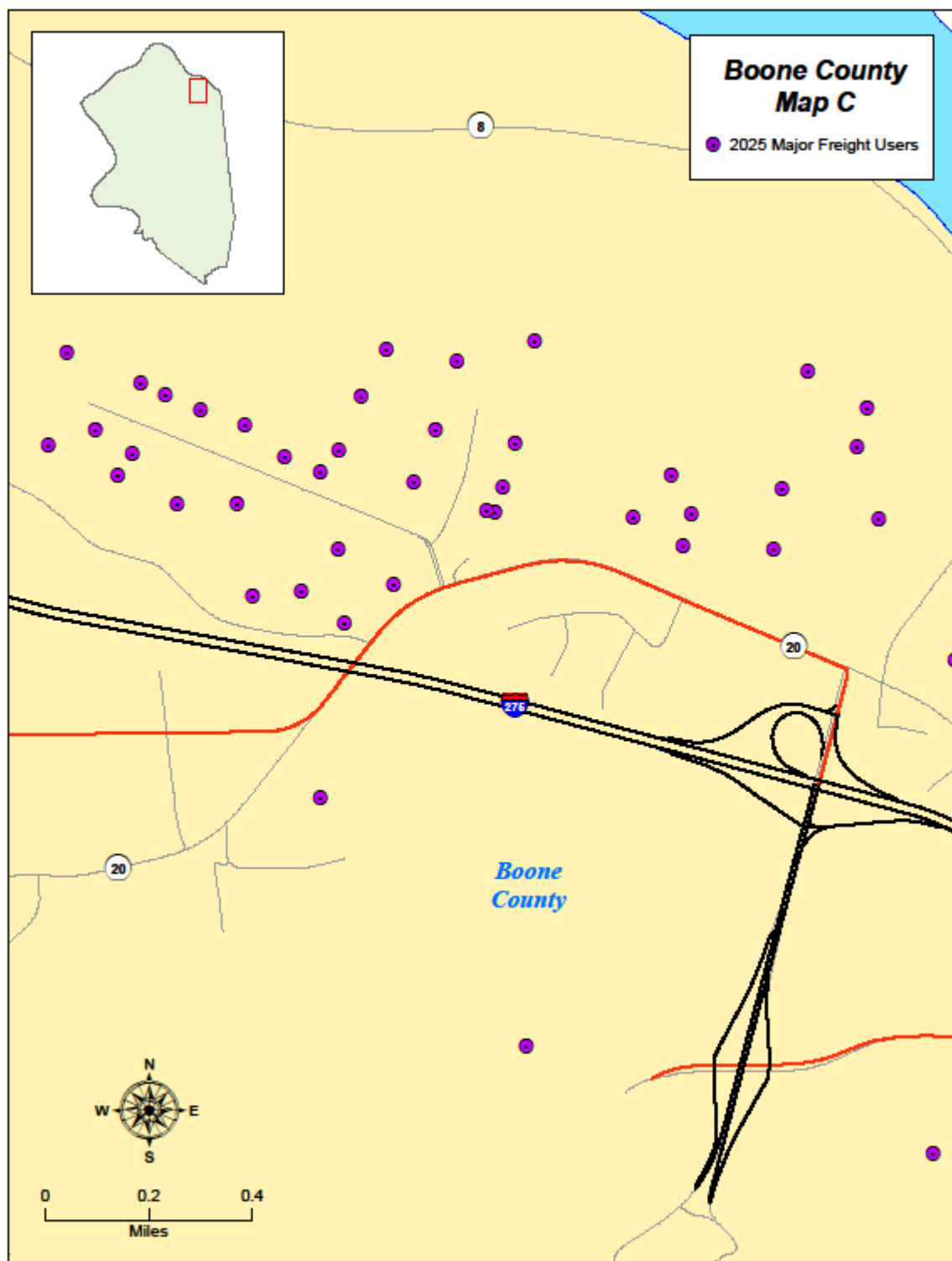
### **3.2 MFUI Location Maps**

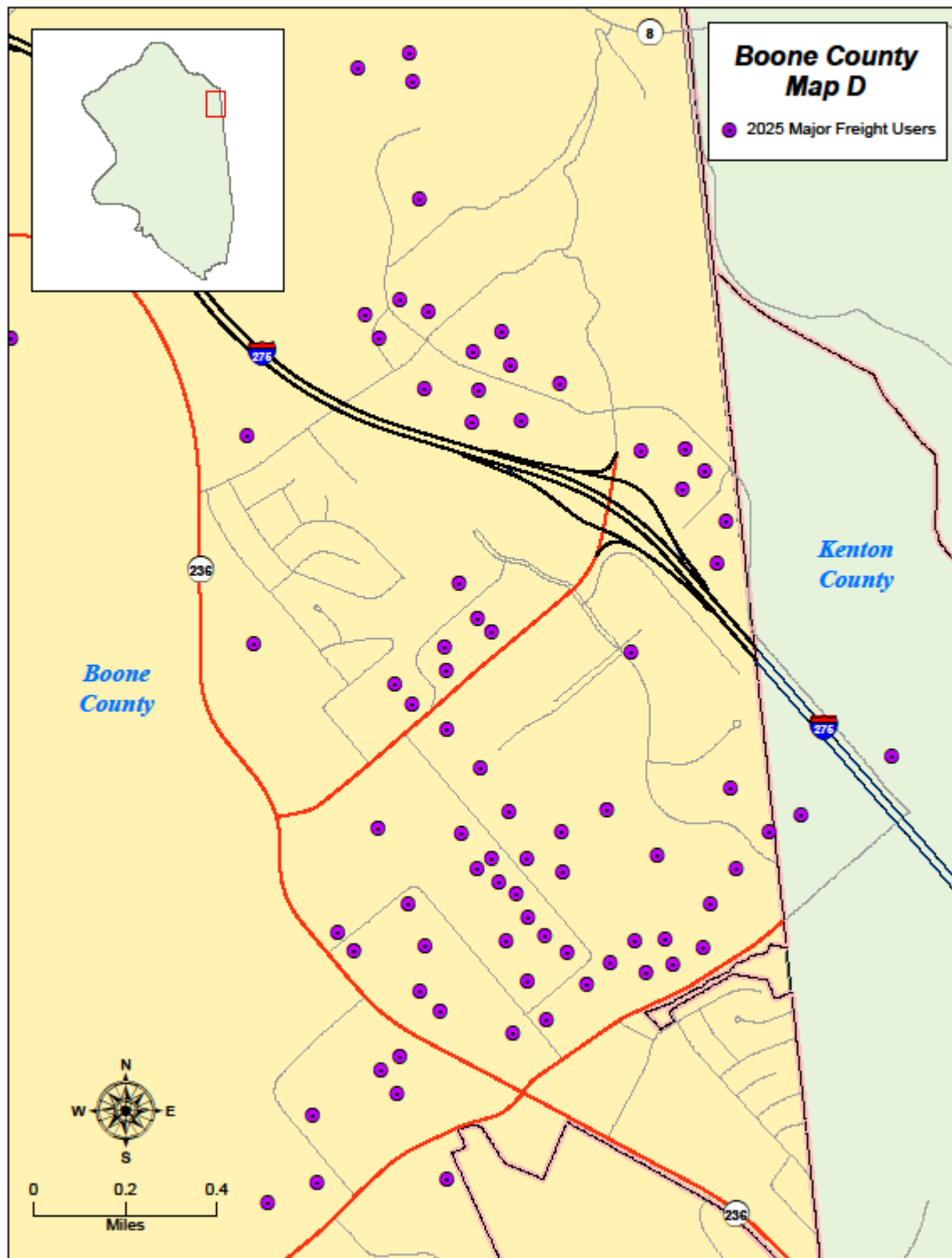
The maps that follow have been created to illustrate the MFUI inventory on regional, county, city or community level. Locations are color-coded and identified by type. For the purpose of this illustration the NKADD identifies the following types (with examples given) as commercial (business offices or parks), distribution (warehouse, soft drink or beer distributors), freight (grain facility, trucking companies, FedEx, UPS), industry (industrial parks, manufacturing), intermodal (airport, riverport).

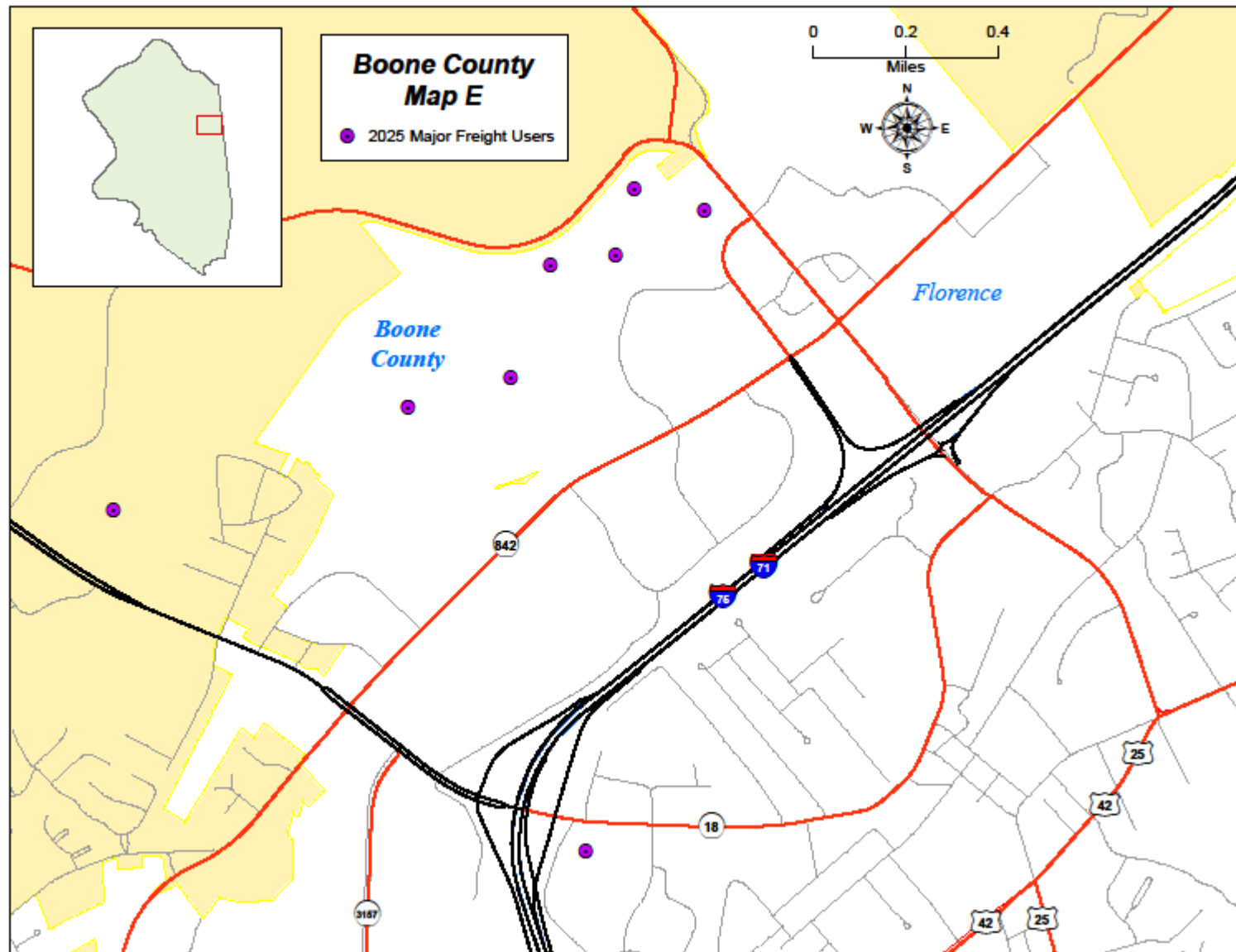


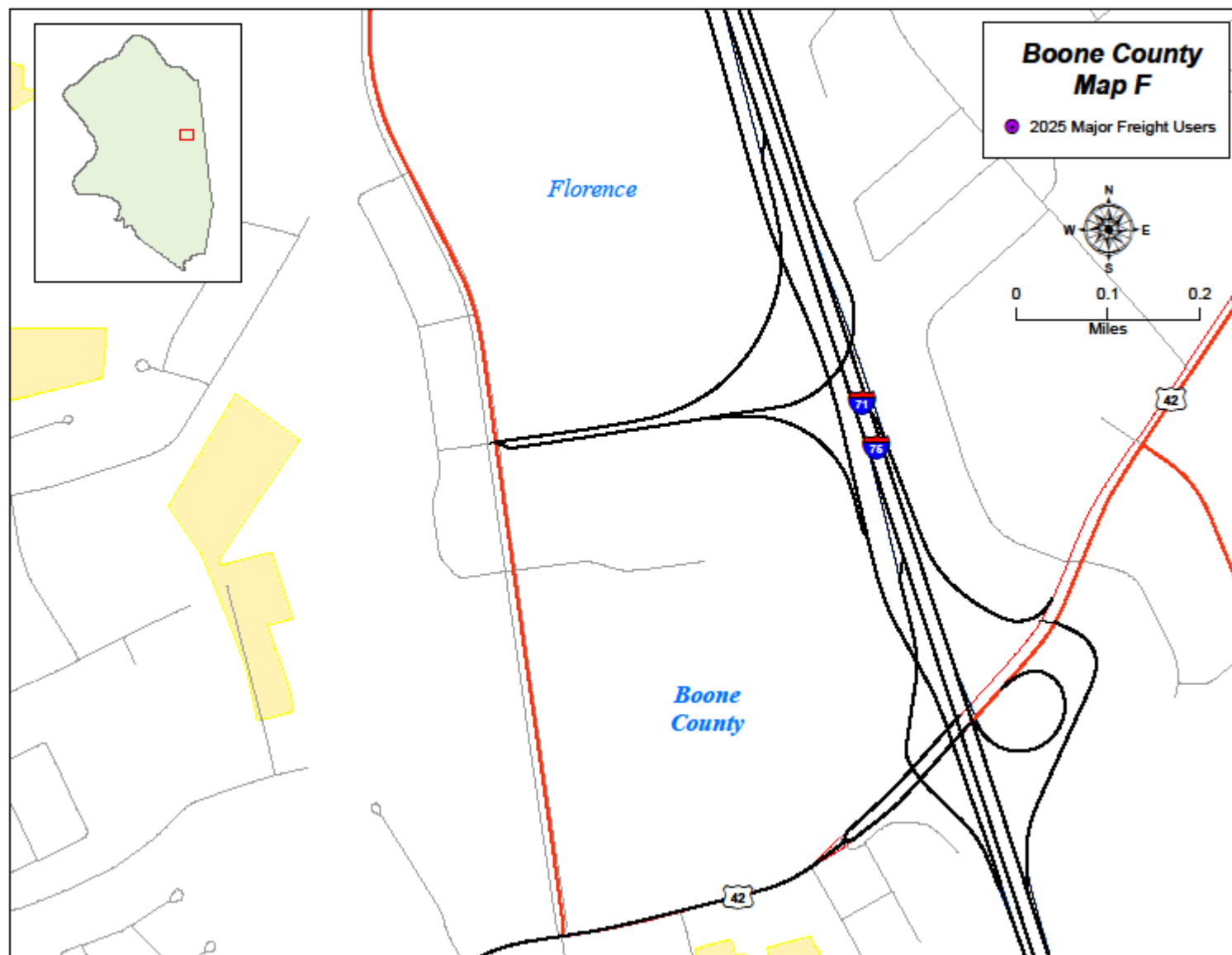




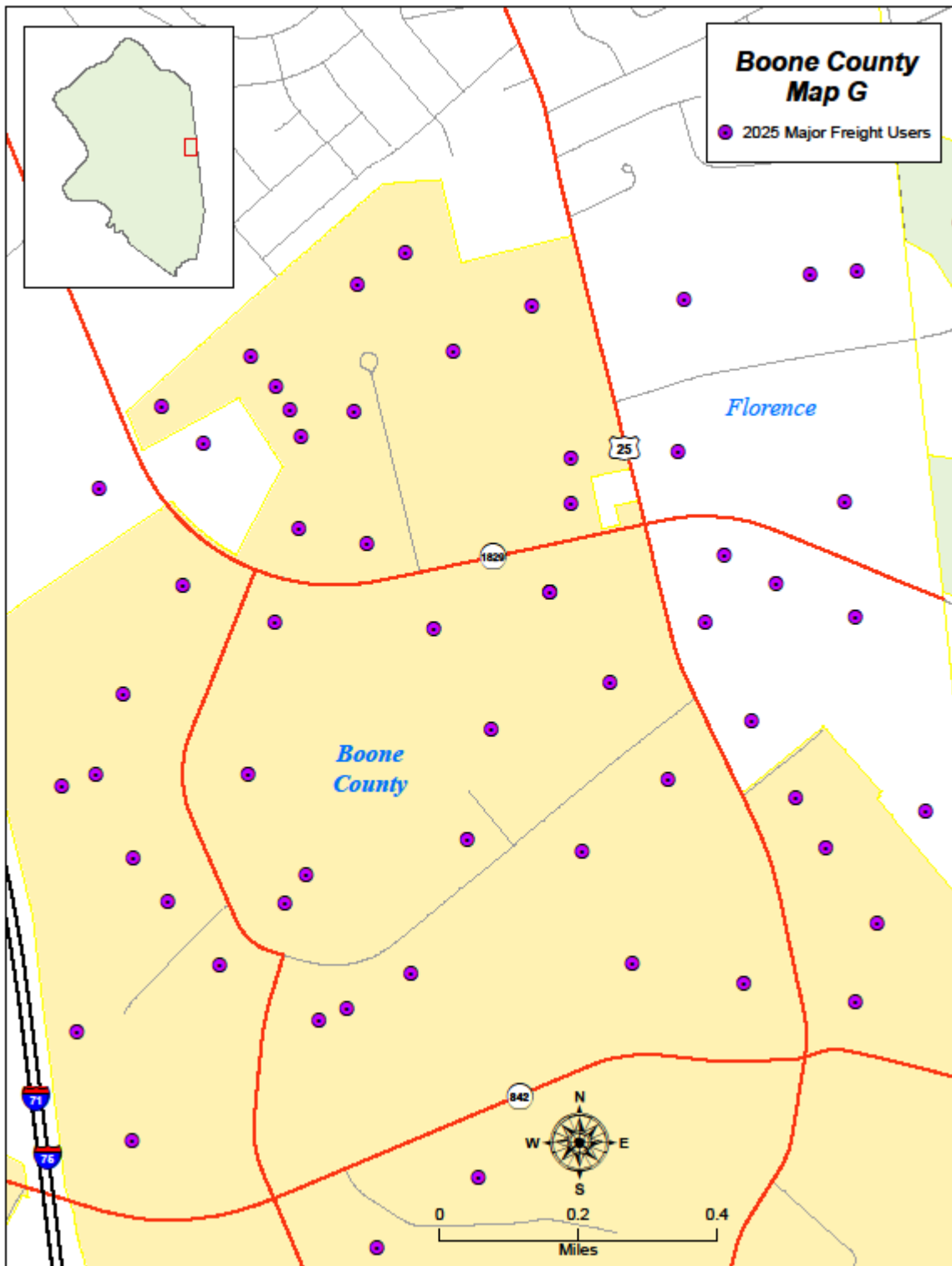


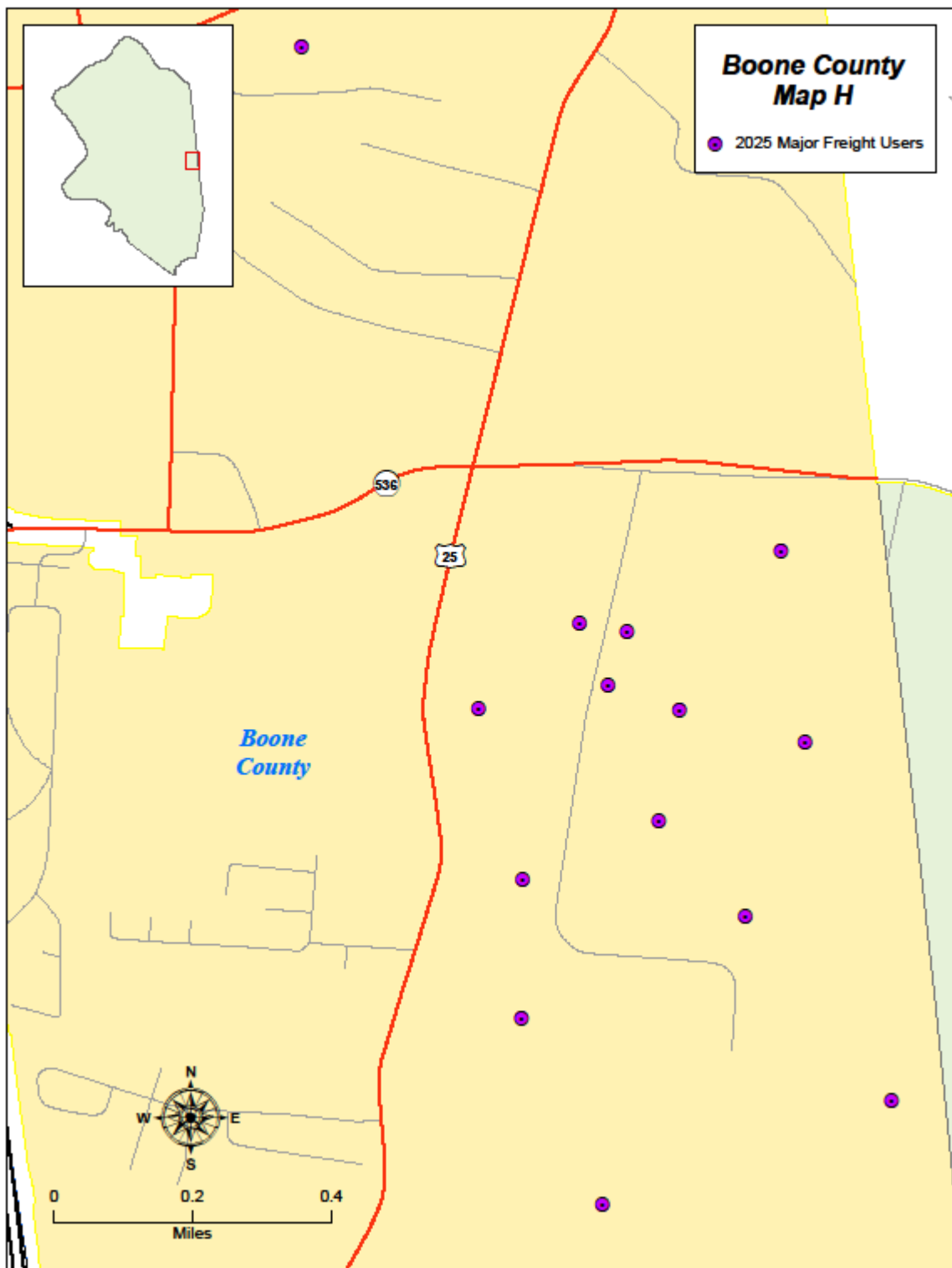


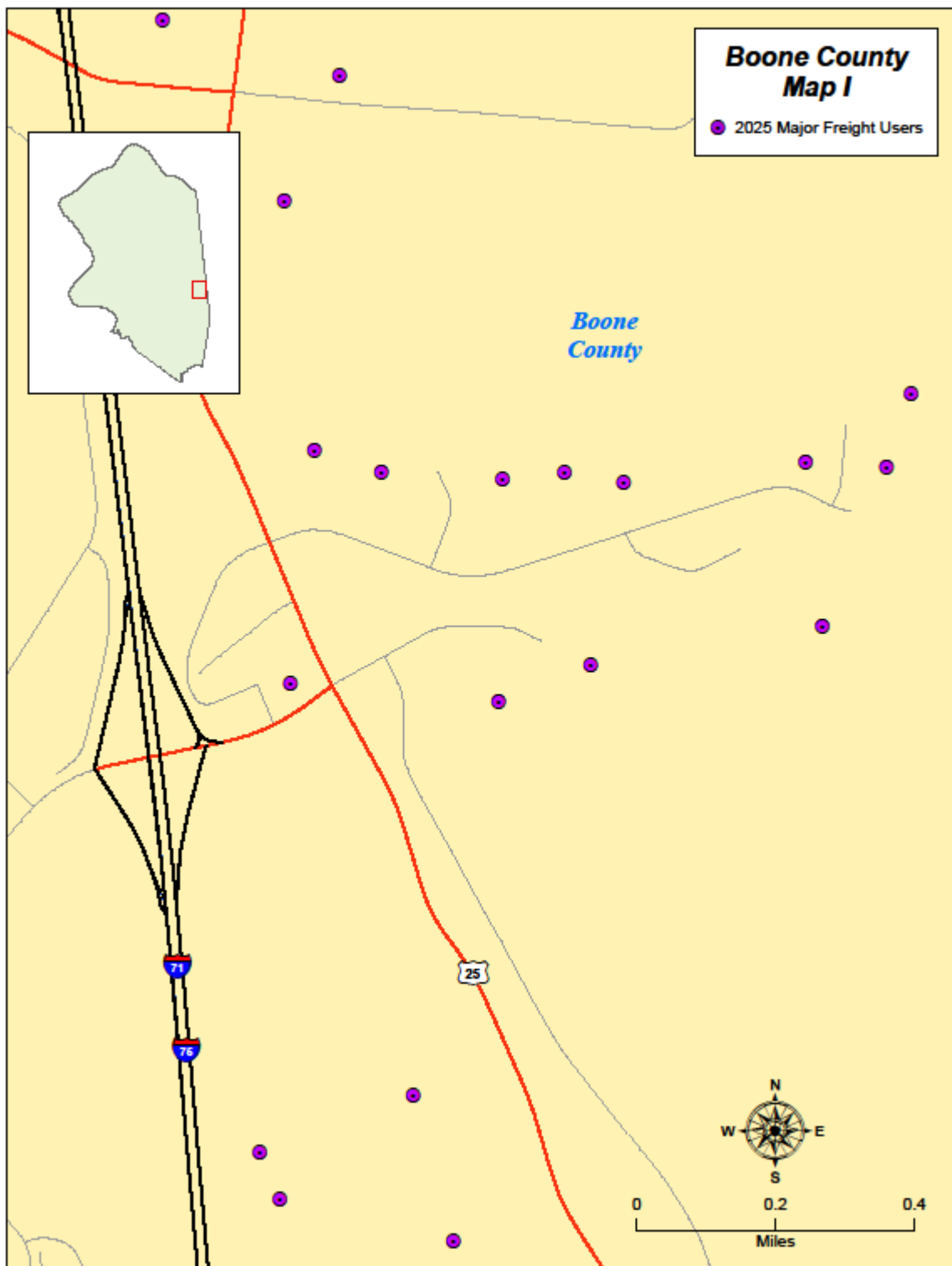


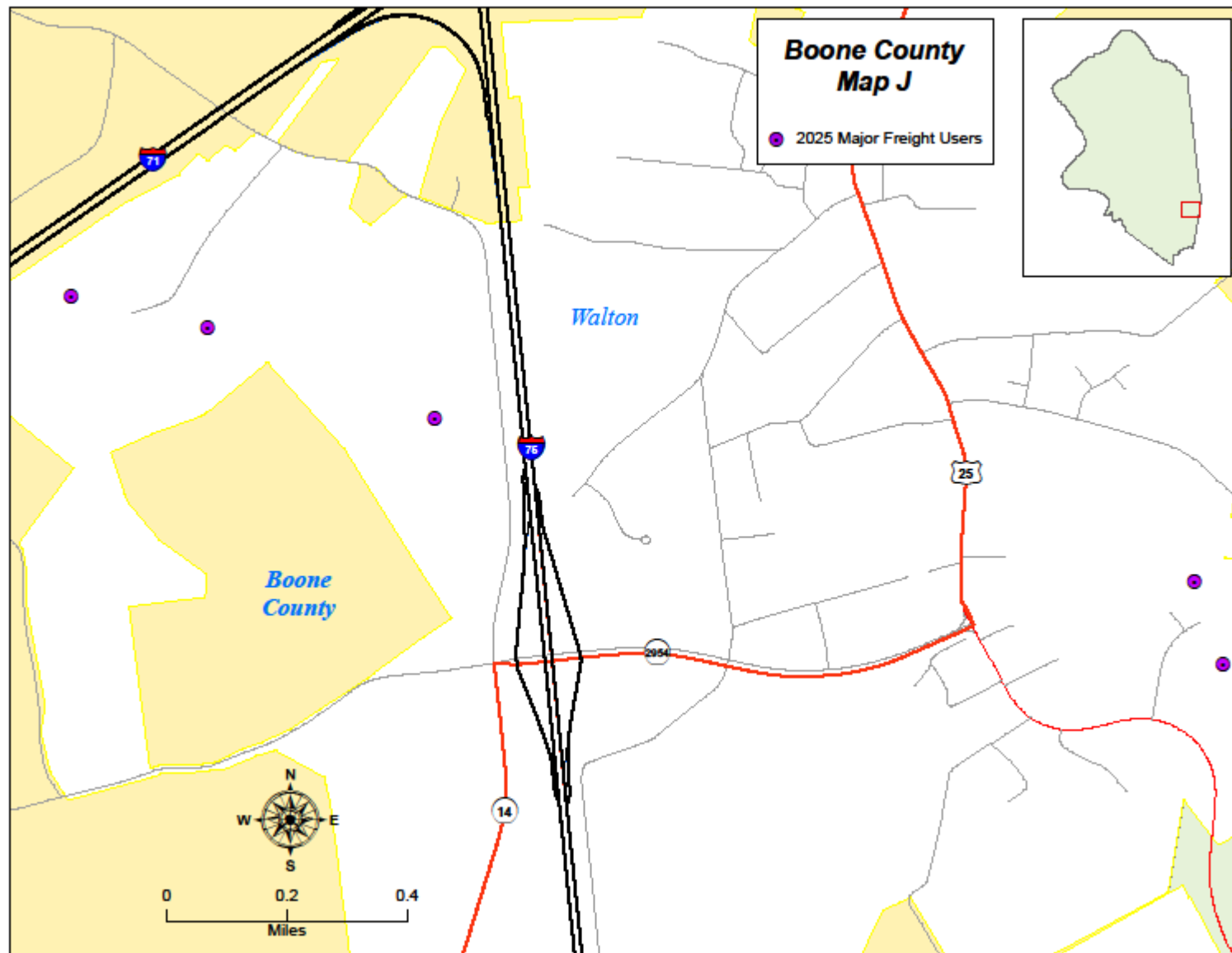




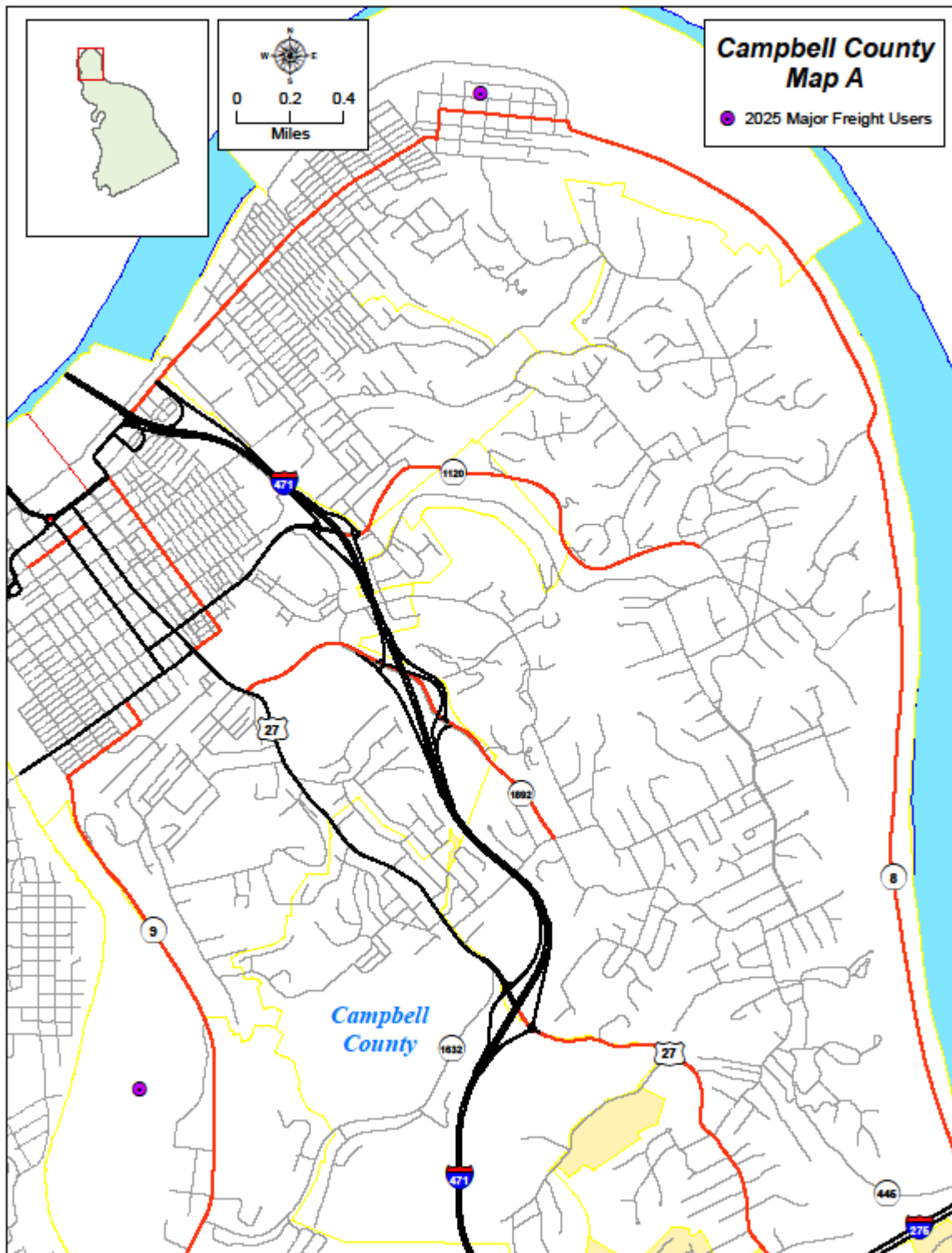


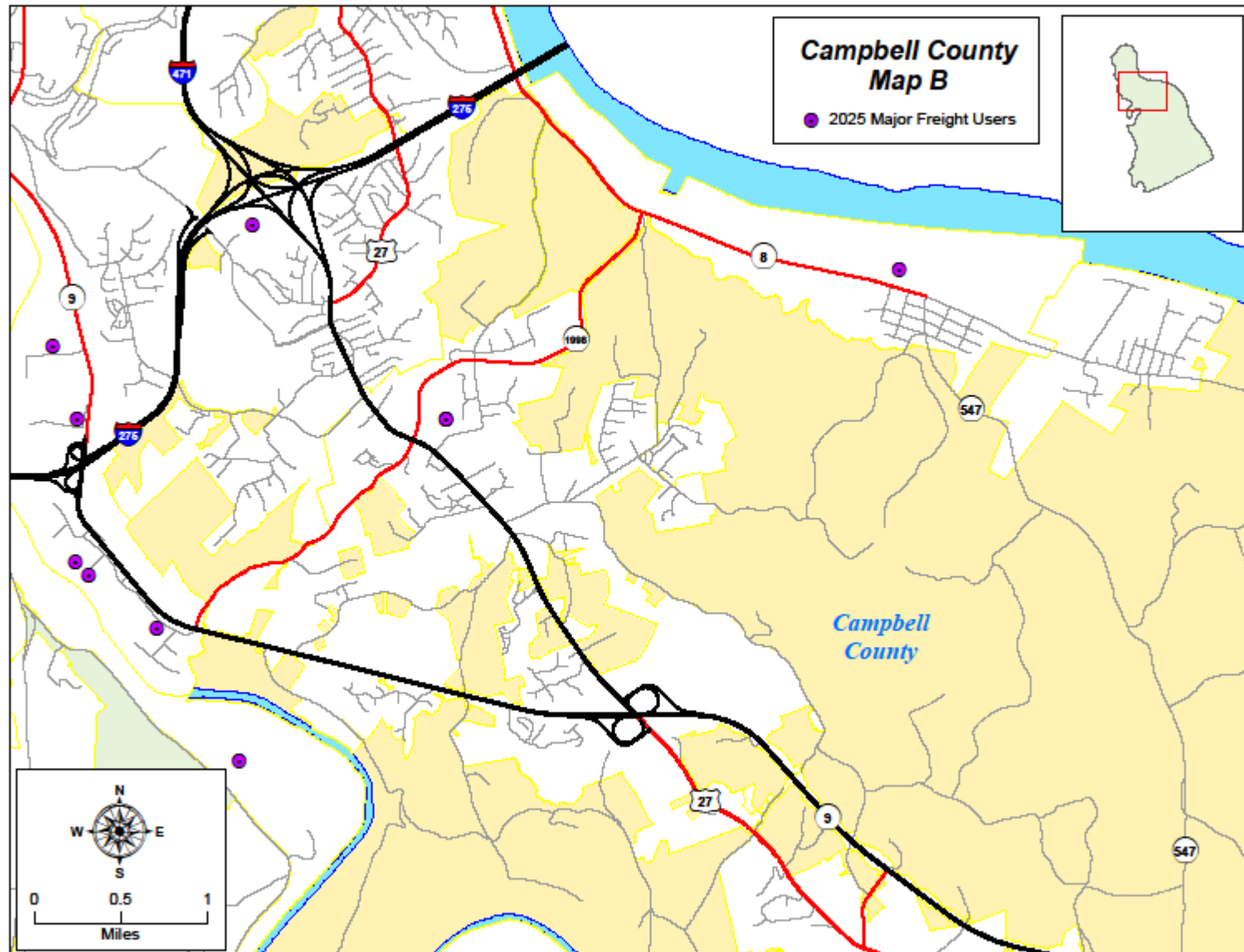


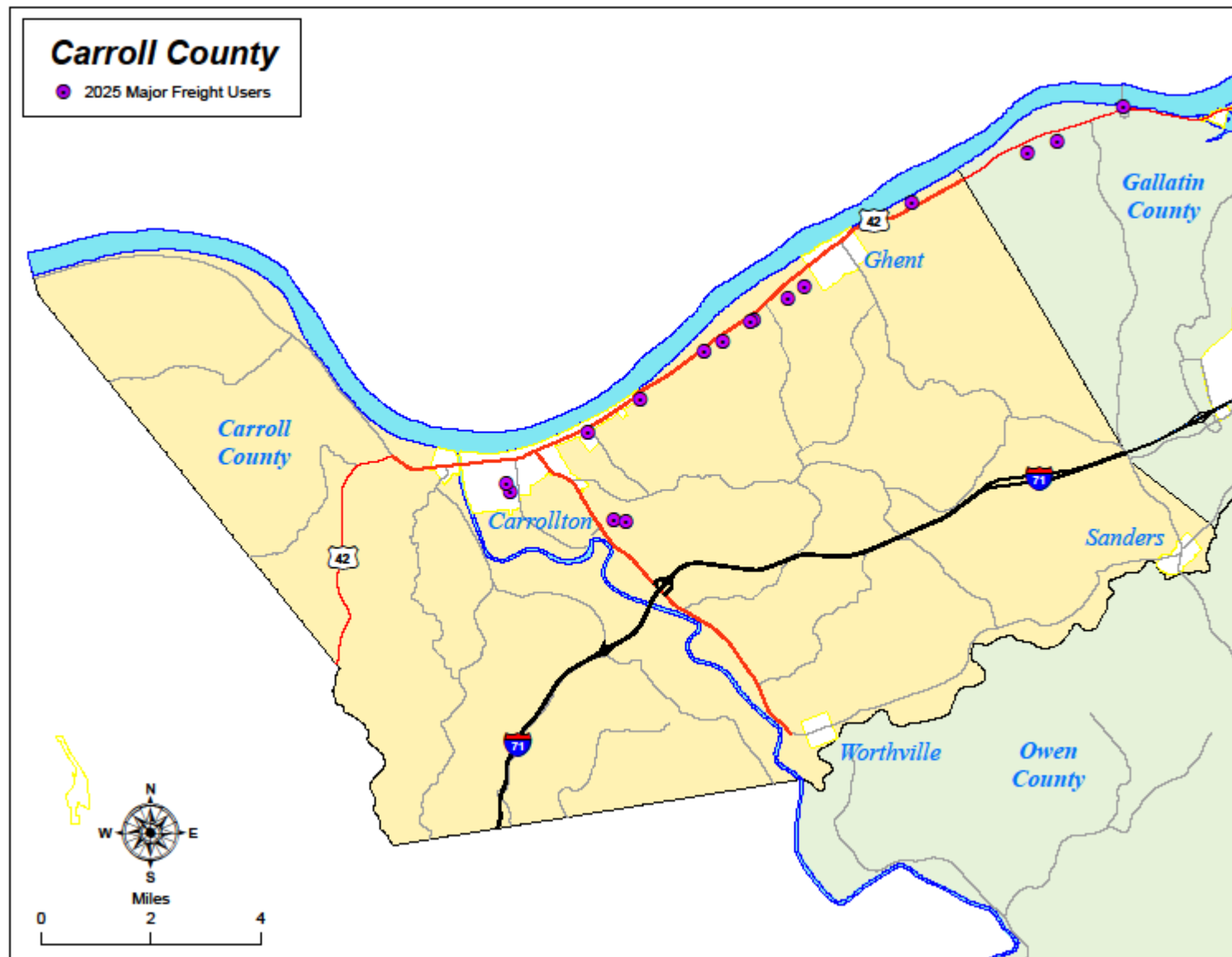




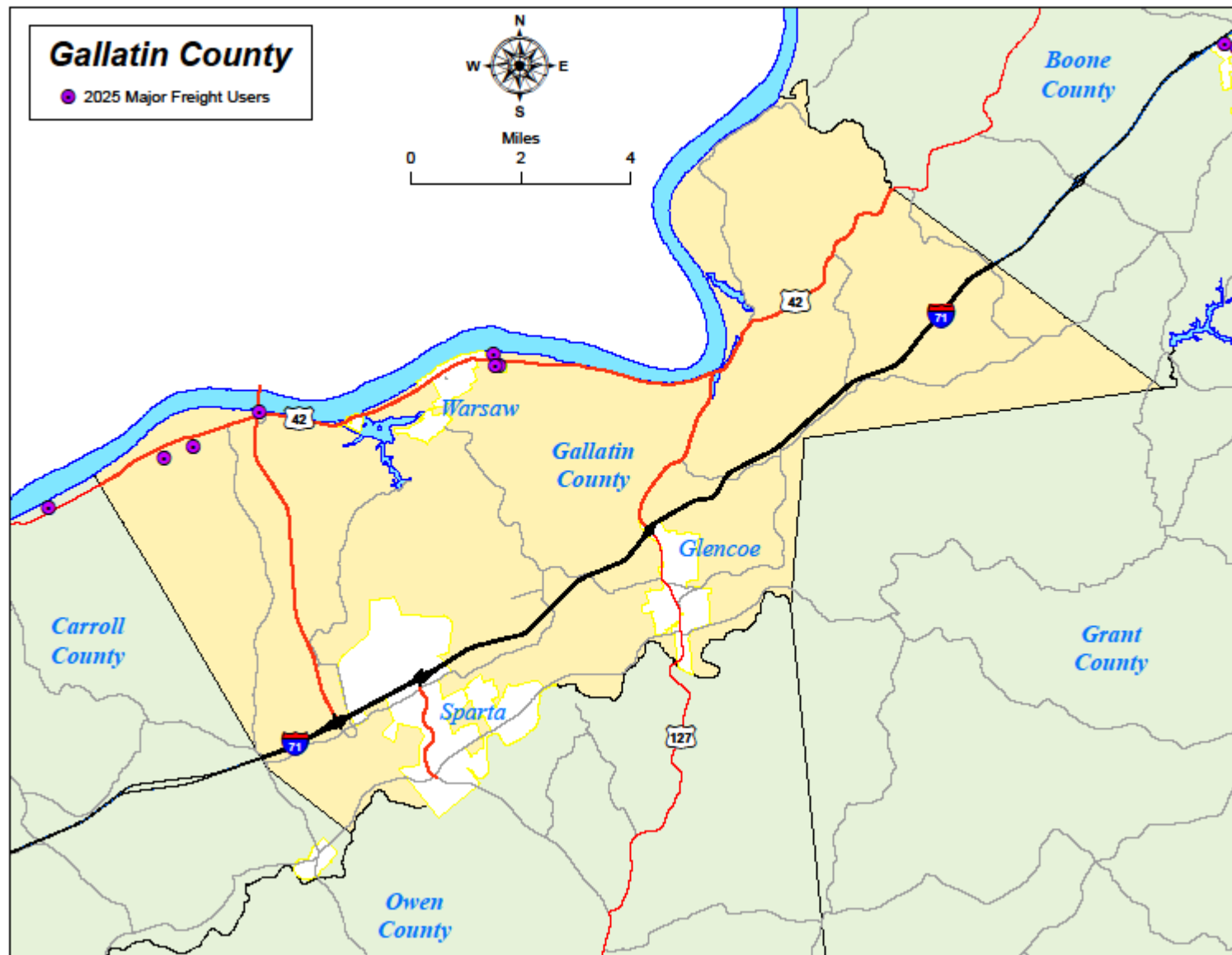


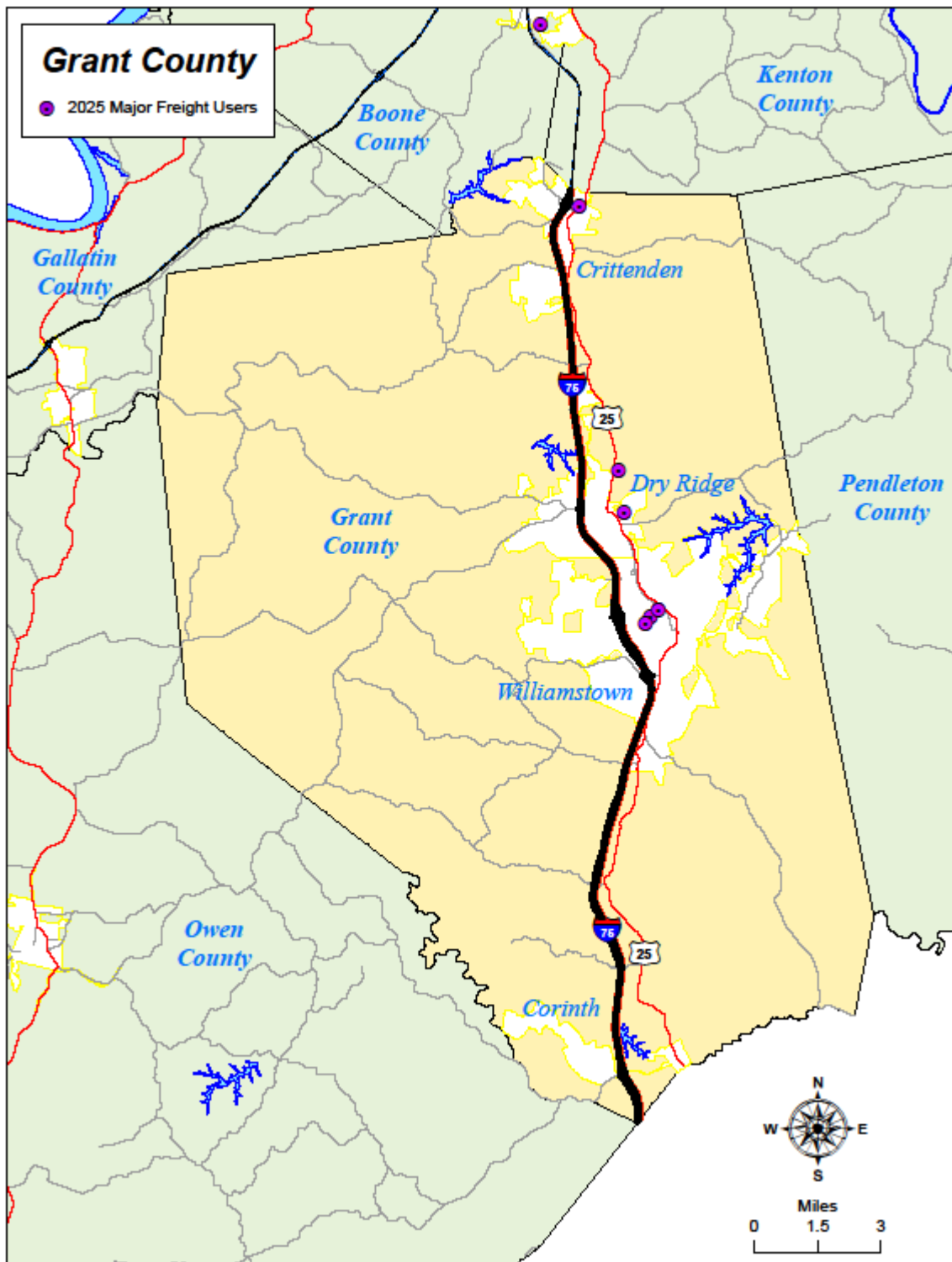


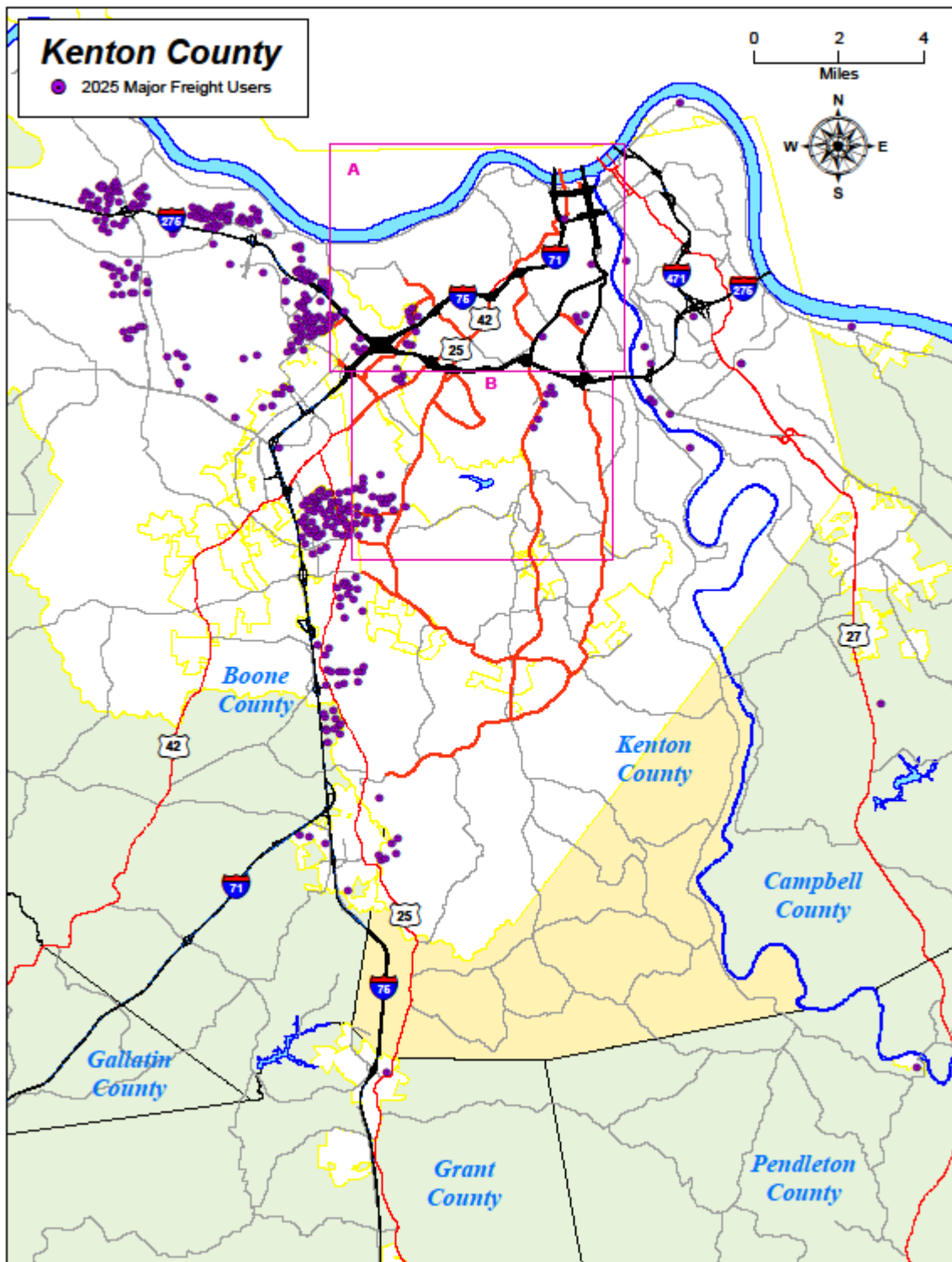


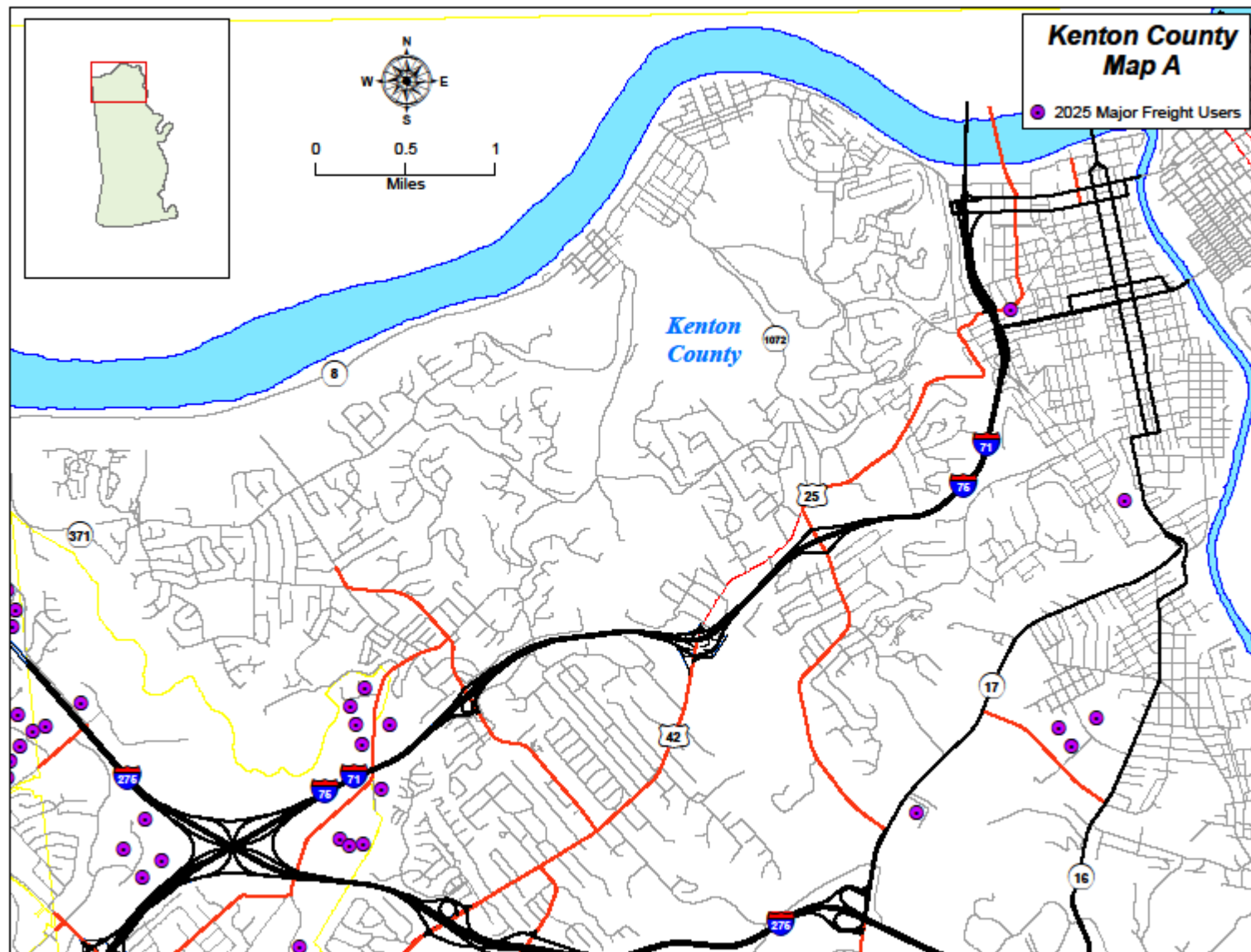


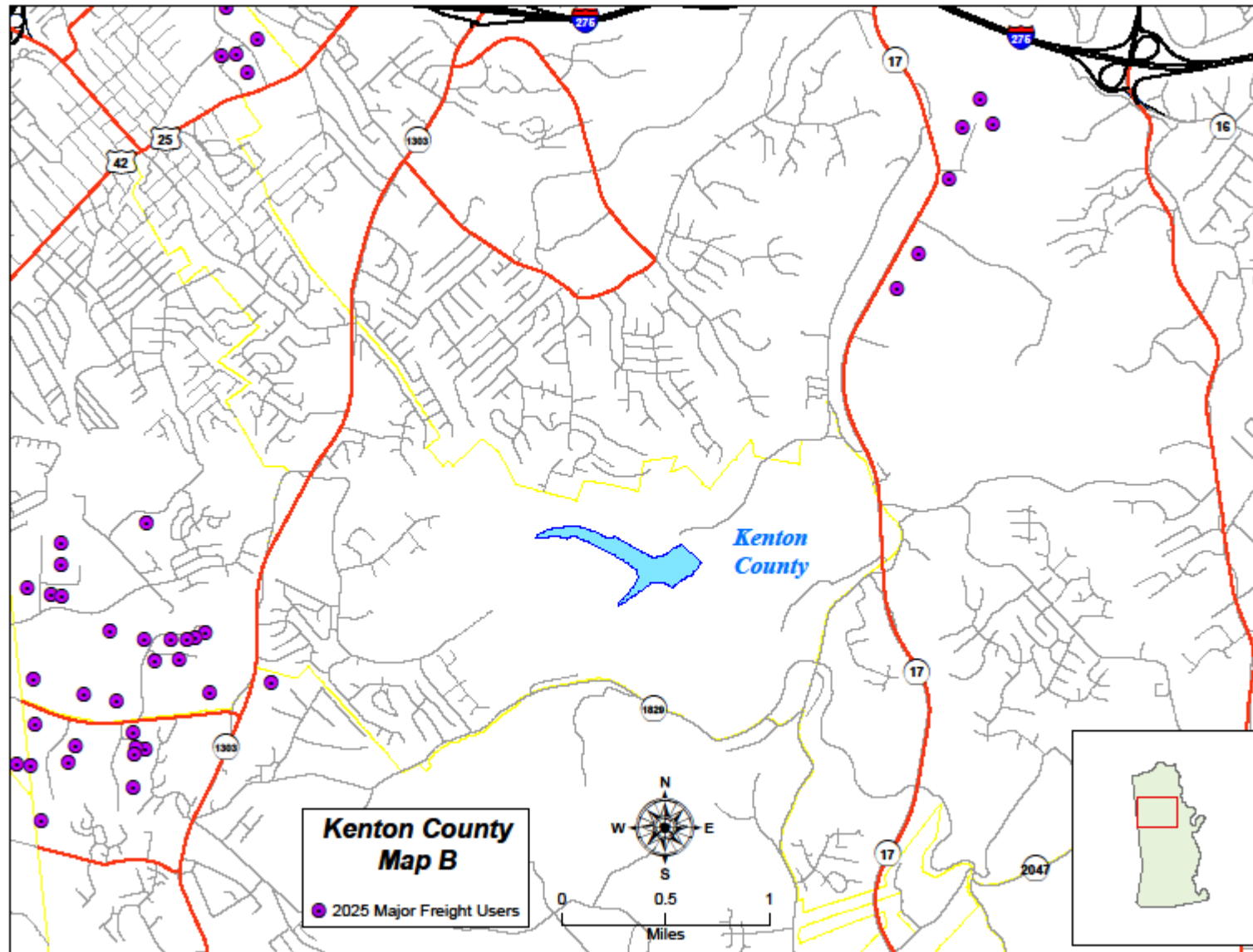


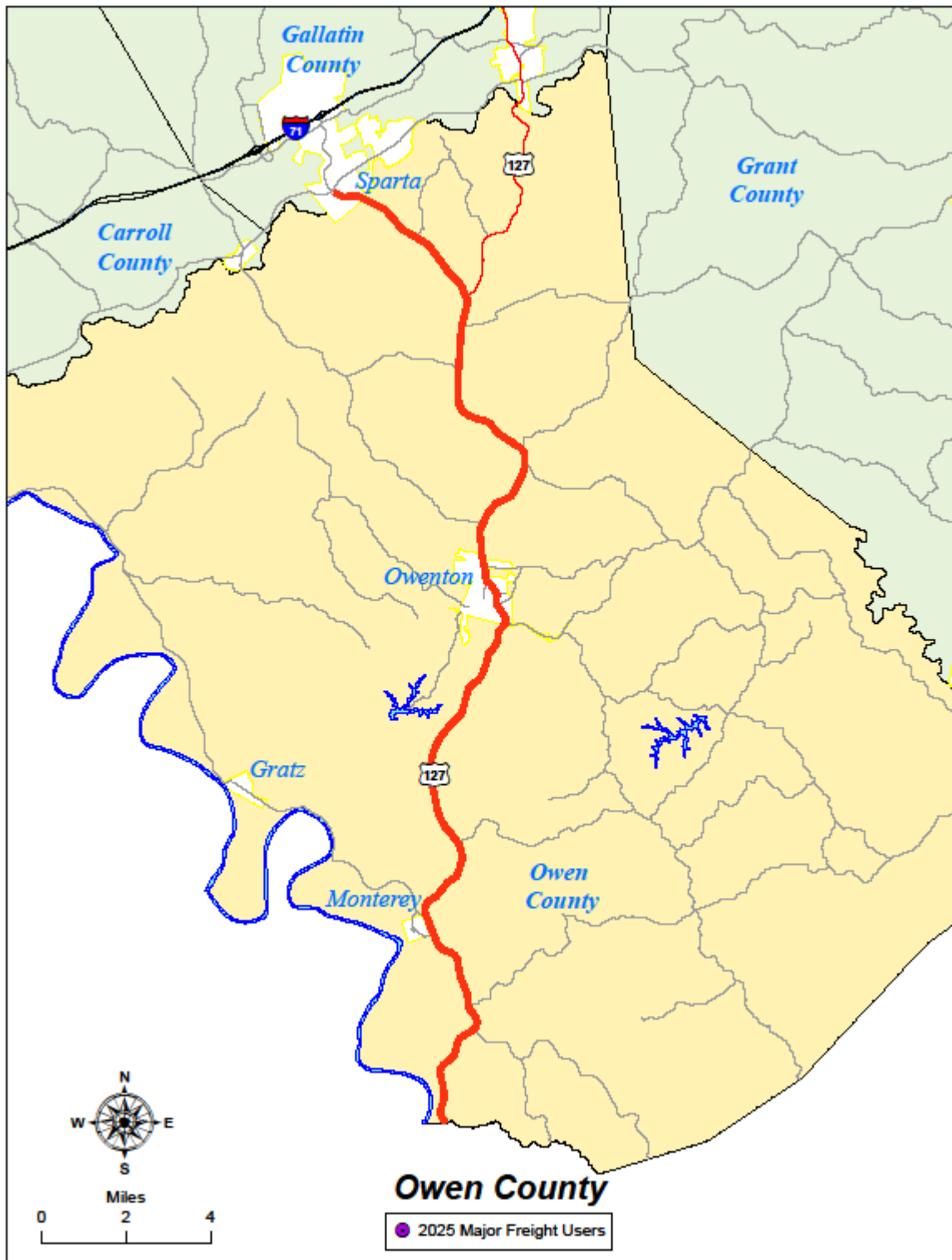


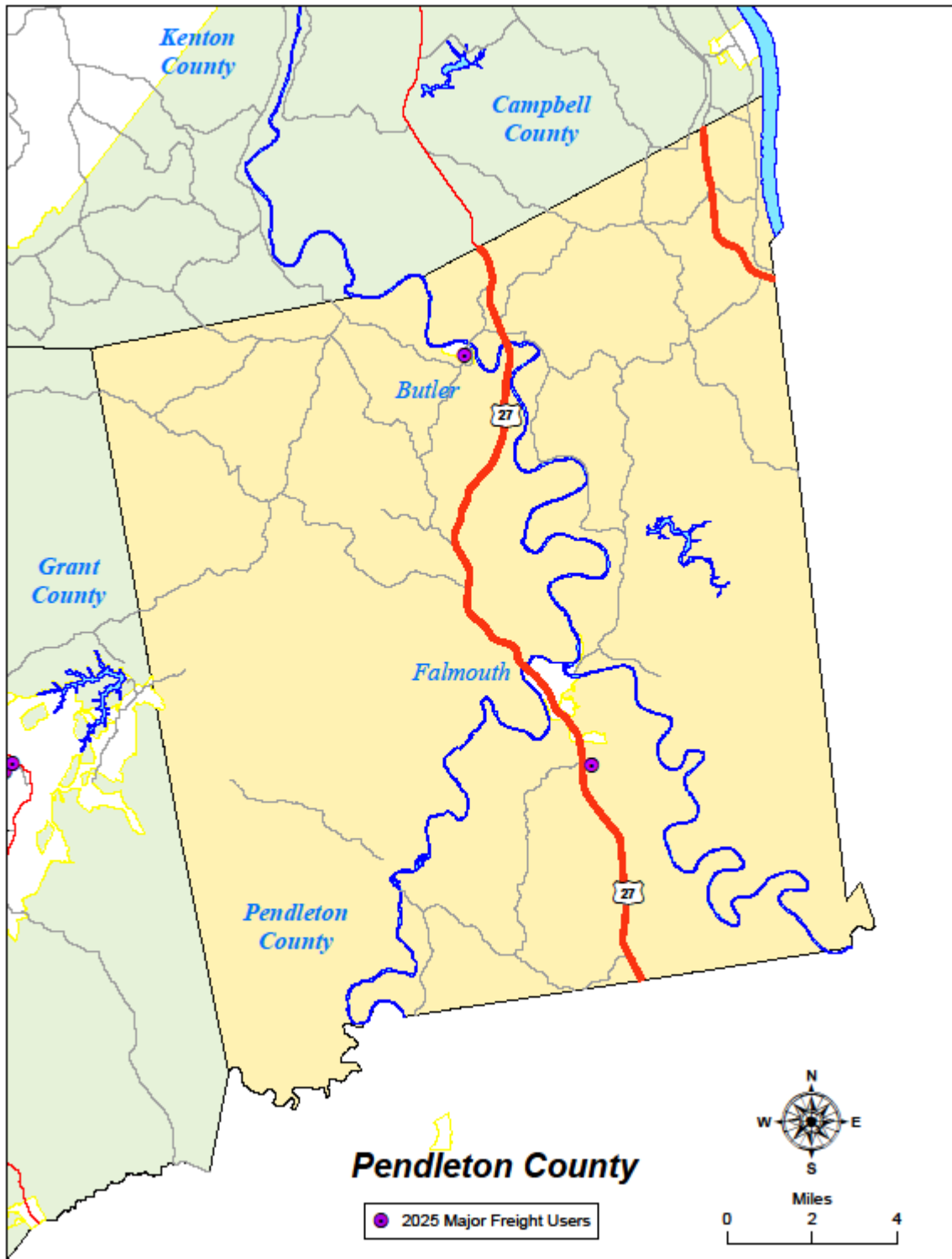












## CHAPTER 4 INTERMODAL CONNECTOR REVIEW

### 4.1 Introduction

An *Intermodal Connector* is defined as a highway facility providing direct access for a freight generator, shipper or port terminal (rail or river) with a major transportation thoroughfare such as an interstate highway. NKADD periodically reviews the FHWA Official National Highway System (NHS) Intermodal Connector Listing for Kentucky for obvious changes to the listing including facilities that have ceased operations or no longer meet FHWA criteria for listing and recommend the facility to be removed from the base list. NKADD also identifies facilities that are not listed on the NHS Intermodal Connector Listing that meet FHWA criteria and recommend those be added to the base list. This information will be used to help identify projects to be recommended for Kentucky's Six Year Plan, the Statewide Long Range Plan, and the Unscheduled Projects List.

#### Official NHS Intermodal Connector Listing

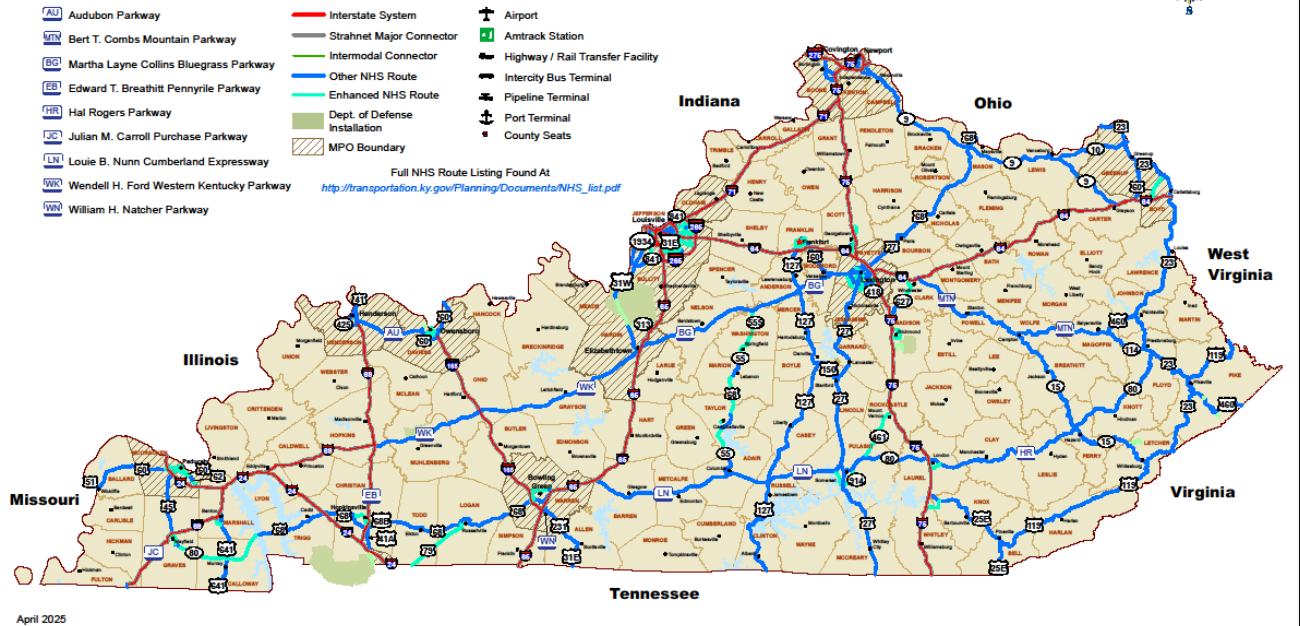
FACILITY	TYPE	CONNECTOR NO.	CONNECTOR DESCRIPTION	CONNECTOR LENGTH	FACILITY ID
Amtrak Station - Catlettsburg	AMTRAK Station	1	CS 2551 (15th St East in Ashland to Amtrak Station Entrance)	0.1	KY14S
Amtrak Station - Fulton	AMTRAK Station	1	US 51 (South limits of Purchase Pkwy Interchange to Newton Rd.), Newton Rd (US 51 to Terminal Entrance)	0.6	KY1S
Bells Lane Petroleum/Chemical Pipeline	Truck/Pipeline Terminal	1	KY 2056 from I-264 W to the Louisville-Ohio river Floodwall	1.1	KY6L
Bells Lane Petroleum/Chemical Port	Port Terminal	1	KY 2056 - Louisville-Ohio Floodwall to I-264- Same as KY 6L	0	KY24P
Campground Rd Petroleum Pipeline	Truck/Pipeline Terminal	1	Campground Rd (Cane Run to Ralph), Kramers Ln (Cane Run to Campground), Ralph ave (Cane Run to Campground Rd)	4.5	KY5L
Campground Rd Petroleum Port	Port Terminal	1	Same as 5L	0	KY23P
Cincinnati/N KY International Airport	Airport	1	KY 212 from I-275 S to the Airport Roadway System	1	KY10A



CCI Energy Slones Branch Terminal	Truck/Rail Facility	1	KY 1441 (US 460 to Clark Elkhorn Tipple #1 Ent), KY 1789 (US 460 to KY 1441)	1.2	KY22R
Golden Oak Mining CO.	Truck/Rail Facility	1	KY 7 (KY 15 to KY 931), KY 931 (KY 7 to Facility)	6.1	KY16R
Greyhound Bus Station - Louisville	Intercity Bus Terminal	1	FS 8829 (Roy Wilkens to Ali Blvd), FS 8806 (Ali Blvd to Facility)	0.8	KY7B
Ivel Coal Tipple	Truck/Rail Facility	1	County Rd 1020 - US 23 to Facility	0.1	KY20R
Lexington Bluegrass Field	Airport	1	FS 8550 - US 60 to Facility	0.2	KY13A
Louisville International Airport	Airport	1	Grade Ln (I-264 to UPS Feeder Truck Entrance), FS 8879 (I-264 to Facility)	1.1	KY8A
Louisville/Ashland Oil/Chevron Dist. Center	Truck/Pipeline Terminal	1	KY 1681 - KY 4 Interchange to Facility	0.3	KY12L
McCoy Elkhorn Coal Corp	Truck/Rail Facility	1	KY 194 - US 119 to Facility	2.1	KY18R
Norfolk Southern Intermodal - Georgetown	Truck/Rail Facility	1	KY 620 - Facility to I-75 Interchange	0.8	KY11R
Norfolk Southern Intermodal - Louisville	Truck/Rail Facility	1	Newburg Rd (I-264 to Bishop), Bishop Ln (Newburg to Jennings), Jennings Ln (Bishop to Facility)	1.3	KY9R
Owensboro Riverport	Port Terminal	1	KY 331 (US 60 to Harbor Rd), Harbor Rd (KY 331 to Facility)	2	KY3P
Apex Energy/Cambrian Coal Corp. Tipple	Truck/Rail Facility	1	KY 80 from US 460 to Facility	2	KY21R
Truck to Barge Coal Dock Cluster, Boyd Cnty	Port Terminal	1	KY 757 from US 23 near Lockwood to 2.3 Miles North	2.3	KY15P

#### 4.2 Map of Intermodal Connectors for NKADD

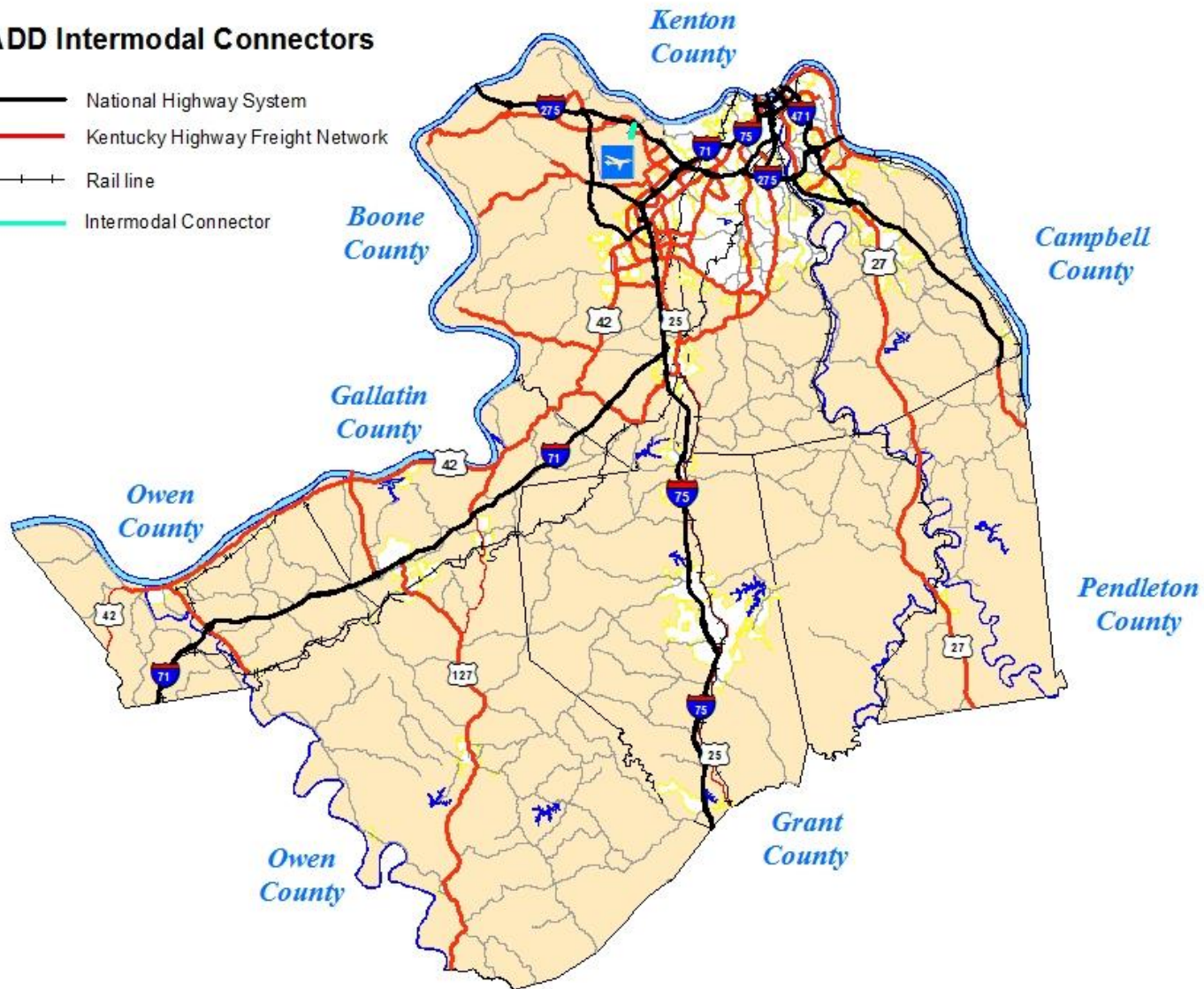
# Kentucky National Highway System With Major Intermodal Terminals



April 2025

## NKADD Intermodal Connectors

- National Highway System
- Kentucky Highway Freight Network
- Rail line
- Intermodal Connector



## **CHAPTER 5: TRUCK PARKING INVENTORY**

### **5.1 Introduction**

The purpose of this task is to maintain an inventory of existing Truck Parking resources. The information will be used to develop an idea of where we may need to improve those facilities in order to promote the safe and efficient movement of people, goods and services.

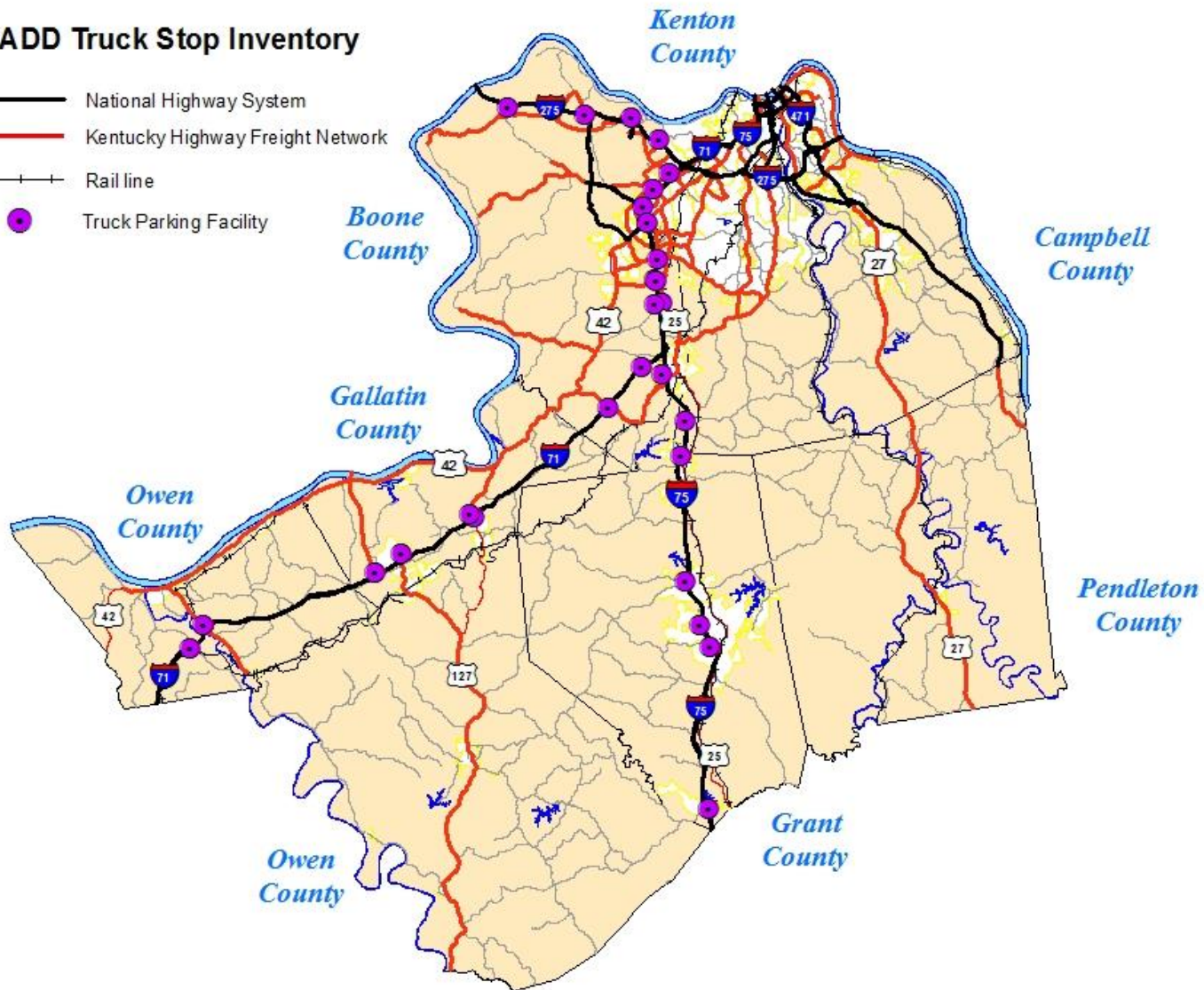
Truck Parking Inventory Includes:

- Locations – Route and Milepoint and/or Landmarks
- Type of Facility – Rest Area, Weigh Station, Welcome Centers, Rest Havens, Commercial Parking Lots, etc.
- Facilities Available (if known) – Rest Rooms, Restaurants, Vending Machines
- Coordinates for latitude and longitude
- Parking Areas with greater than 20 spaces available
- Minimum threshold for number of trucks to be determined by ADD Planners Assistance Coordinators, with approval by the Division of Planning, SPAC, however the number of trucks and/or spaces will not be specifically identified in this inventory. Indicators may be included as in, less than 10 trucks, more than 10 trucks, greater than 20, etc. The numbers should indicate the number of trucks and not the number of parking spaces available.

### **5.2 Map of Truck Parking Inventory**

## NKADD Truck Stop Inventory

- National Highway System
- Kentucky Highway Freight Network
- + + + Rail line
- Truck Parking Facility



## **CHAPTER 6: LIST OF RAIL YARDS**

### **6.1 Introduction**

The purpose of this inventory is to assist the KYTC in identification of rail facility locations, intermodal connectors and providing information for the statewide rail plan. This helps serve the KYTC goal of promoting the safe efficient movement of goods and services throughout the state. KYTC has GIS data on known railyards within in the state. The ADDs assisted in identification of these locations, creating this list in FY10. In FY17, KYTC developed from the rail yard inventory and other informational sources, a draft list of data and locations utilized as freight loading / unloading facilities. The data provided included all information available such as the name, location and function (e.g. bulk transfer, container yard, classification yard) of the facility.

Each year the ADD reviews this listing for minor revisions. During this process, if facilities are discovered that are not identified or had a change in operation (new, expansion, closed) the ADD planner records the name, location, and updates the database and map providing the information to KYTC. At a minimum the facility name, county, lat/long, and comments section are provided to KYTC. The ADD should contact the yard master to find out what type of freight activity is occurring: transfer to other modes such as river, rail or truck; transfer of grain, chemicals, fertilizer, coal, rock or other bulk materials; transfer or storage of containers from river, rail, or truck; transfer or storage of motor vehicles for distribution across the country.

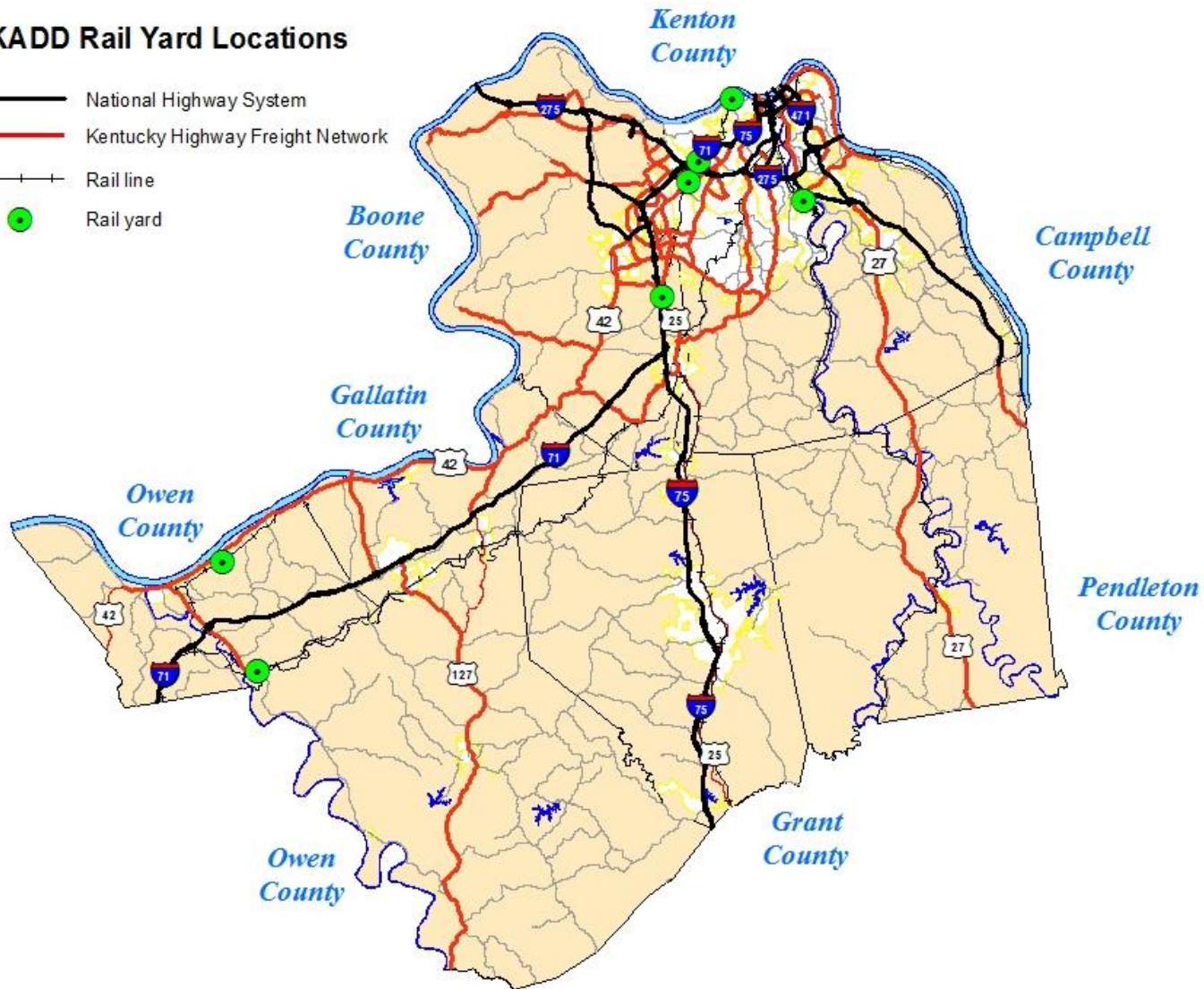
Contacts and local knowledge should be cultivated regarding the region's rail yards and updates submitted to KYTC on an as needed basis. During the course of business it may become necessary to contact local stakeholders and/or industry experts in order to garner local input on transportation issues or opportunities affecting the area. The NKADD maintains this list of rail yards in order to know where improvements to intermodal connections may be warranted in order to promote the safe and efficient movement of goods and services.

### **6.2 Map of Rail Yard Locations**



## NKADD Rail Yard Locations

- National Highway System
- Kentucky Highway Freight Network
- Rail line
- Rail yard



## CHAPTER 7: BICYCLE PEDESTRIAN ASSETS

### 7.1 Introduction

The ADD works with identified communities to locate any existing bicycle or pedestrian assets or accommodations within the jurisdiction to develop spatial information accordingly. Accommodations or assets may include: location of sidewalks, crosswalks, bike lanes, etc.

As transportation planner we are tasked to provide recommendations on the best ways to incorporate design, operational efficiency, and better management of our transportation network. In relationship to bicycle and pedestrian facilities; often time we don't have accurate (if any) data on where current facilities are located. To better consider and recommend the inclusion of future facilities within ALL types of road work, we need to know where logical connections may be located. We need to know where current missing links may be located in a downtown sidewalk network. We need to identify opportunities for connections of bicycle facilities; both locally and regionally.

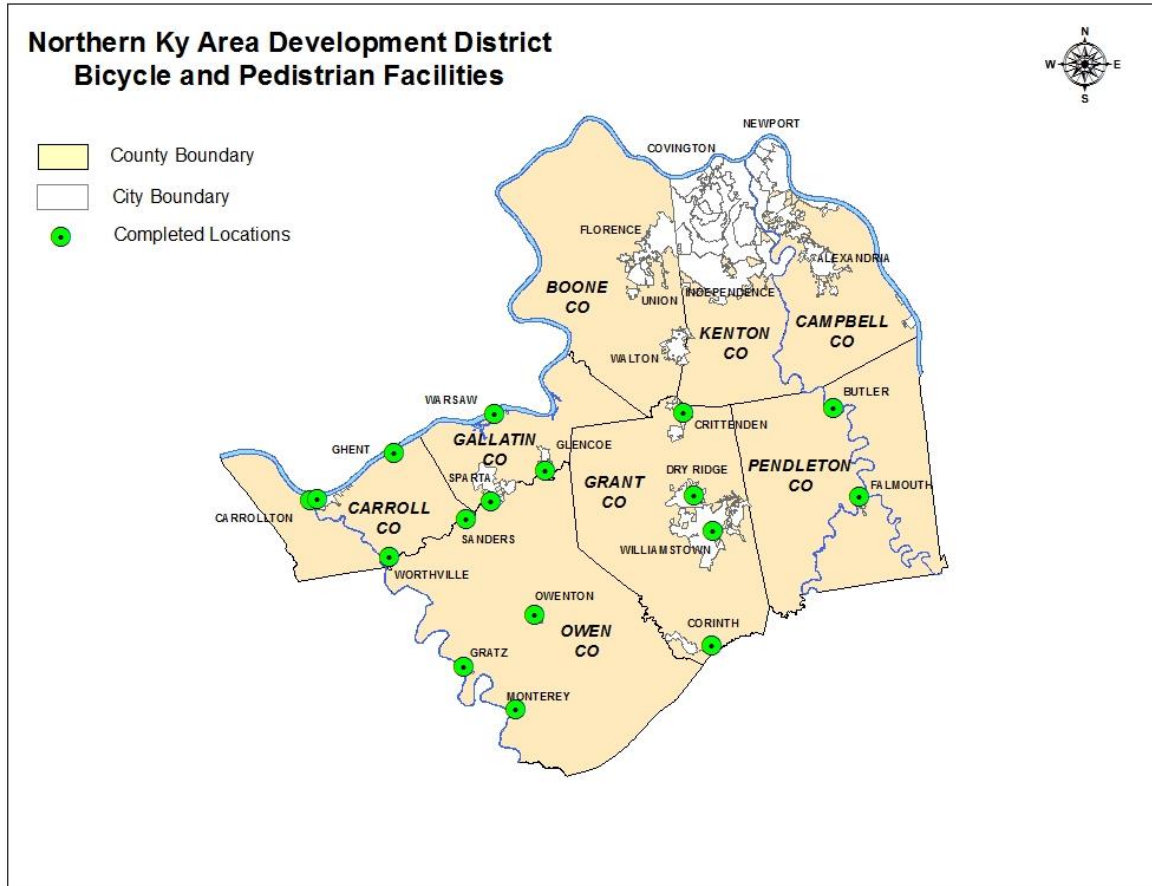
In 2014 the Cabinet partnered with the ADD agencies to begin the start of a more complete statewide bicycle and pedestrian GIS inventory database of all pedestrian and bicycling facilities/assets. These facilities include anything that the bike/ped public uses for non-motorized transportation in the city or community such as sidewalks, bike lanes, bike paths, or separated multi-use paths. Each year we review and update the file.

The main objective is to better serve the non-motorized transportation needs of our public. Our common goals of providing a safer, more efficient, environmentally sound, and fiscally responsible complete transportation system that helps deliver better economic opportunities and enhancing the quality of life in Kentuckians.

The bike ped plans and information collected by the ADD,s is currently available on an interactive map at. [Bike and Pedestrian Facilities \(ky.gov\)](http://www.ky.gov/BikeandPedestrianFacilities)



## 7.2 Bicycle and Pedestrian Facilities (Completed Locations)



Cities completed updates for FY24:

FY25

Carrollton (June 2025)  
Owenton (June 2025)

FY25

Falmouth (June 2025)  
Williamstown (June 2025)

FY26

Warsaw (June 2025)  
Dry Ridge (June 2025)

FY27

Prestonville (June 2025)  
Sanders (June 2025)  
Gratz (June 2025)  
Corinth (June 2025)

Ghent (June 2025)  
Sparta (June 2025)  
Monterey (June 2025)

Worthville (June 2025)  
Glencoe (June 2025)  
Crittenden (June 2025)

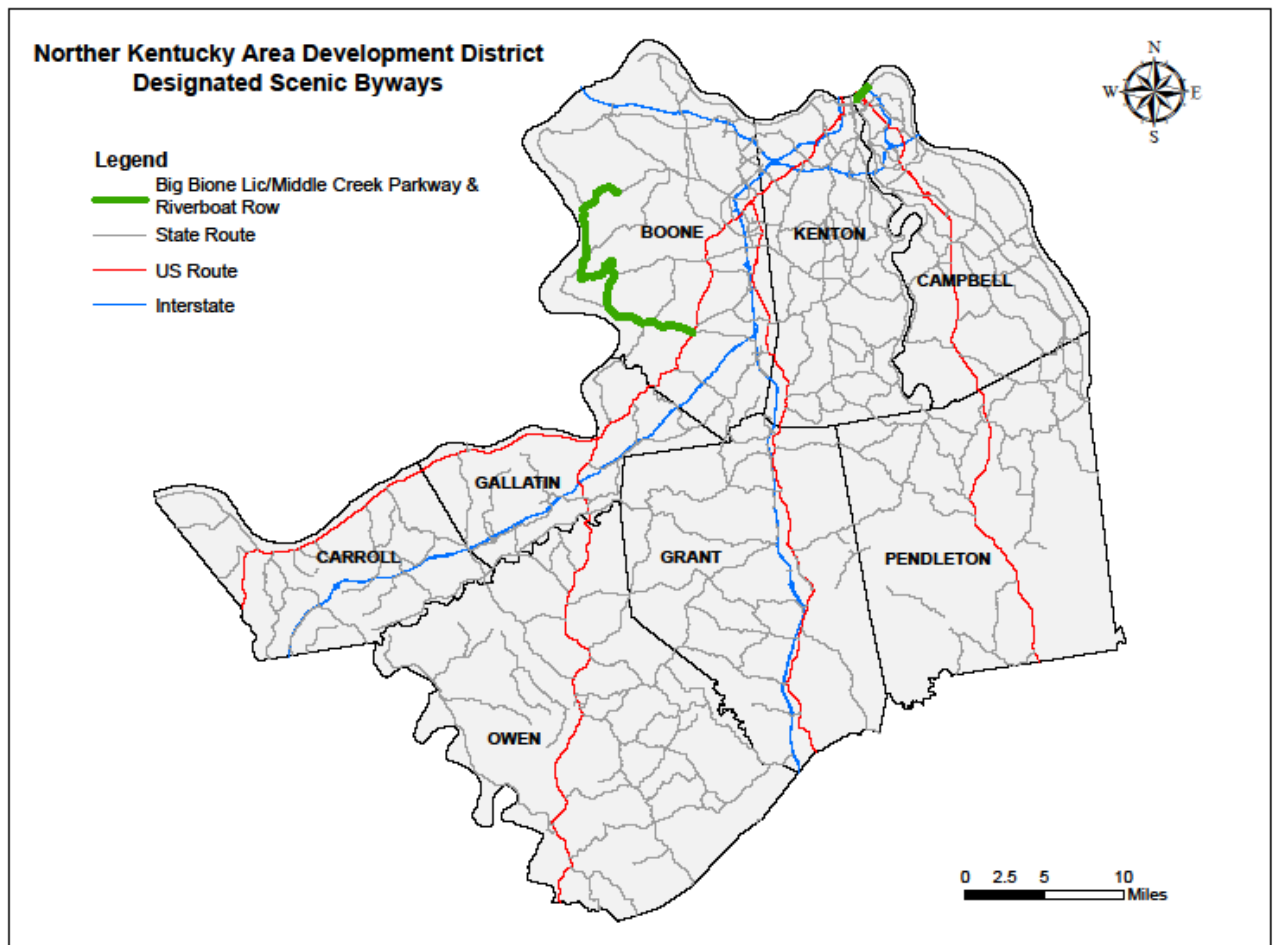
## CHAPTER 8: SCENIC BYWAYS INVENTORY

## 8.1 Introduction

The ADD works with the office of Local Programs Kentucky Scenic Byway Program to evaluate and collect data for all routes designated as scenic byways/highways. Local Champions were also identified for each route.

The Big Bone Lick/Middle Creek Parkway in Boone County and Riverboat Row in Campbell County are designed.

## 8.2 Location Map



## CHAPTER 9: TRANSPORTATION TERMS AND ACRONYMS

### **A**

#### **Adequacy Rating**

Adequacy Rating is a numerical score from 0 to 100 evaluating the current condition of a roadway segment based on congestion, safety, and pavement condition.

#### **American Association of State Highway and Transportation Officials (AASHTO)**

AASHTO is a nonprofit, nonpartisan association representing highway and transportation departments in the 50 states, the District of Columbia and Puerto Rico. It represents all five transportation modes: air, highways, public transportation, rail and water. Its primary goal is to foster the development, operation and maintenance of an integrated national transportation system.

#### **American Public Transit Association (APTA)**

The American Public Transportation Association (APTA) is an international organization that has been representing the transit industry for over 100 years, since 1882. Over ninety percent of passengers using transit in the U.S. and Canada are carried by APTA members. APTA includes bus, rapid transit and commuter rail systems, and the organizations responsible for planning, designing, constructing, financing and operating transit systems. In addition, government agencies, metropolitan planning organizations, state departments of transportation, academic institutions, and trade publications are also part of APTA.

#### **Americans with Disabilities Act of 1990 (ADA)**

A federal law prohibiting discrimination against people with disabilities. Requires public entities and public accommodations to provide accessible accommodations for people with disabilities.

#### **Area Development District (ADD)**

Fifteen regional planning agencies mandated by state legislation. The fifteen ADDs in Kentucky are the regional planning agencies through which various federal and state programs are administered. The state's rural transportation planning program is administered and facilitated through the fifteen Area Development Districts.

#### **Arterial**

A class of roads serving major traffic movements (high-speed, high volume) for travel between major points.

#### **Association of Metropolitan Planning Organizations (AMPO)**

AMPO is a nonprofit, membership organization established in 1994 to serve the needs and interests of Metropolitan Planning Organizations (MPOs) nationwide. AMPO offers its members MPOs technical assistance and training, conferences and workshops, frequent print and electronic communications, research, a forum for transportation policy development and coalition building, and a variety of other services.

### **B**

#### **Bicycle Facilities/Amenities**

A general term denoting provisions made to accommodate or encourage bicycling, including parking facilities, shared roadways, bikeways, etc.

#### **Bicycle Lane (Bike Lane)**

A portion of a roadway which has been designated by striping, signing and pavement markings for the exclusive use of bicyclists.

**Bicycle Route (Bike Route)**

A segment of a system of bikeways designated by the jurisdiction having the authority with appropriate directional and informational markers, with or without a specific bicycle route number. See also signed, shared roadway.

**Bikeway**

A facility designed to accommodate bicycle travel for recreational or commuting purposes. Bikeways are not necessarily separated facilities; they may be designed and operated to be shared with other travel modes.

## **C**

**Census Defined Urbanized Area (UZA)**

UZA is defined by the Bureau of the Census as being comprised of "... one or more central places/cities, plus the adjacent densely settled surrounding territory (urban fringe) that together has a minimum of 50,000 persons." The urban fringe consists of a contiguous territory having a population density of at least 1,000 per square mile. The UZA provides population totals for transportation-related funding formulas that require an urban/rural population number.

**Coal Haul**

Coal Haul is those routes over which coal was reported transported by truck during the previous calendar year.

**Collector**

A roadway linking traffic on local roads to the arterial road network.

**Critical Crash Rate Factor (CRF)**

Critical Crash Rate Factor-the quotient showing the ratio of the crash rate for a roadway spot or segment divided by the critical crash rate for that roadway spot or segment based on roadway type, number of lanes, and median type. The critical rate for a roadway type is determined annually by the Kentucky Transportation Center.

## **E**

**Extended Weight**

Extended Weight is a designated highway network over which certain vehicular weight limits are relaxed for coal haul vehicles.

## **F**

**Federal Highway Administration (FHWA)**

The division of the United States Department of Transportation responsible for funding highway policy and funding.

**Federal Transit Administration (FTA)**

A Division of the United States Department of Transportation (USDOT) responsible for funding transit planning and programs.

**Functional Classification**

A system of classifying rural and urban roadways by use and level of traffic volume: interstates, arterials, collectors, and local roads are the chief classes.

## **G**

### **Geographic Information System (GIS)**

A GIS is a computerized mapping technology that allows the creation and overlay of various geographic features, commonly linked to socioeconomic and other data.

## **H**

### **Highway District Office (HDO)**

Kentucky has twelve district highway offices located throughout the state.

### **Highway Information System (HIS)**

Highway Information System: a comprehensive database of highway inventory information maintained by, and in many cases collected by, the KYTC Division of Planning.

## **I**

### **Infrastructure Investment and Jobs Act (IIJA,) also known as the Bipartisan Infrastructure Law**

Invested \$1.2 trillion in infrastructure across various sectors, including transportation, water, broadband, and energy. It aims to modernize and improve existing infrastructure while also investing in new programs and initiatives.

### **Intermodal**

The ability to connect and the connections between modes of transportation.

### **Intermodal Surface Transportation Efficiency Act of 1991 (ISTEA)**

Legislative initiative by the U.S. Congress that restructured funding for transportation programs. ISTEA authorized increased levels of highway and transportation funding from FY92-97 and increased the role of regional planning commissions/MPO in funding decisions. The Act also required comprehensive regional and statewide long-term transportation plans and places and increased emphasis on public participation and transportation alternatives. Many of the programs that began with ISTEA have been continued through the Transportation Equity Act for the 21st Century (TEA-21), which was signed into law June of 1998.

### **International Roughness Index (IRI)**

International Roughness Index is a measure of pavement roughness.

## **K**

### **Kentucky Transportation Cabinet (KYTC)**

KYTC is the state agency responsible for transportation funding, planning and programs at the statewide level.

## **L**

### **Level of Service (LOS)**

This term refers to a standard measurement used by transportation officials which reflects the relative ease of traffic flow in a scale of A to F, with free-flow being rated LOS-A and highly congested conditions rated as LOS-F.

### **Local Roads**

Local roads carry the lowest traffic volumes and typically connect with other local roads and collectors (i.e., internal subdivision roads). This class of roadway is generally excluded from Federal funding.

### **Long-Range Statewide Transportation Plan**

A federally required long-range transportation plan for a minimum period of twenty years. The federal legislation requires that a plan be developed for at least a twenty year period and must be financially balanced. This document, which was first produced in Kentucky in 1995 and updated in 1999, included both policy and projects. The 2006 Plan is a policy only plan

## **M**

### **Metropolitan Planning Organization (MPO)**

The organizational entity designated by law with responsibility for developing transportation plans and programs for urbanized areas of 50,000 or more in population. MPOs are established by agreement of the Governor (or Governors) and units of local government which together represent 75% of the affected population of an urbanized area. OKI is the MPO for the Greater Cincinnati area, which includes Boone, Kenton and Campbell Counties in Kentucky and Dearborn county in Indiana and also Hamilton, Clermont, Butler and Warren counties in Ohio.

### **Metropolitan Statistical Area (MSA)**

An area defined by the Office of Management and Budget as a Federal statistical standard. An area qualifies for recognition as an MSA if it includes a city of at least 50,000 population or an urbanized area of at least 50,000 with a total metropolitan area population of at least 100,000.

### **Mile Point (MP)**

Mile Point; used, along with county and route number, to identify location of a highway segment.

## **N**

### **National Highway (NHS)**

A network of interstate and state highways which serve longer distance mobility needs, are important to the nation's economy, defense, and mobility, and are eligible for matching federal funds for capital improvement.

### **National Truck Network (NN)**

National Truck Network are those routes on the state maintained road system which have been specifically designated by KYTC and approved by FHWA for use by motor vehicles (trucks) with increased dimensions (e.g., 102 inches wide, 13-6" high, semi trailers up to 53 feet long, trailers 28 feet long-not to exceed two (2) trailers per truck).

## **P**

### **Pedestrian**

A person who travels on foot or who uses assistive devices, such as a wheelchair, for mobility.

### **Poverty Level**

The minimum level of money income adequate for families of different sizes, in keeping with American consumption patterns. These levels are determined annually by the U.S. government on the basis of an index originated by the U.S. Social Security Administration and released biennially by the U.S. Census Bureau for states and counties.

#### **Project Identification Form (PIF)**

An identification form developed by KYTC Division of Planning for all transportation projects that contains problem statement, project description, specific geometric and analytical data, cost estimates, and assumptions for the project. The form is prepared when the transportation need is first noted and the information is entered into the Unscheduled Project List database and is updated periodically. Maps and pictures for the project may also be attached.

## **R**

#### **Pavement Rideability Index (RI)**

A general measure of pavement conditions. The RI is based on a scale of 0 to 5, with 0 being poor and 5 being very good.

#### **Right-of-Way (ROW)**

A ROW is a priority path for the construction and operation of highways, light and heavy rail, railroads, et cetera. The ROW phase of a project is the time period in which land in the right-of-way will be purchased.

## **S**

#### **Safe, Accountable, Flexible and Efficient Transportation Equity Act: A Legacy for Users**

**(SAFETEA-LU)** The federal transportation reauthorization legislation, enacted August 10, 2005, as Public Law 109-59. SAFETEA-LU authorizes the Federal surface transportation programs for highways, highway safety, and transit for the 5 year period 2005-2009 and continued many of the provisions of TEA-21, but also further emphasized and elevated the importance of safety and security, further coordination of statewide planning with the metropolitan areas, consultation with local elected officials, and continued public involvement.

#### **Scenic Byways**

These routes are nominated by local support groups and designated by the Transportation Cabinet because they are deemed to have roadside or view sheds of aesthetic, historical, cultural, natural, archaeological, and/or recreational value worthy of preservation, restoration, protection, and or enhancement.

#### **Shared Use Path**

A pathway physically separated from motor vehicle traffic and used by bicyclists and pedestrians. Generally, shared use paths serve corridors not served by streets and highways to minimize conflict with cross-street traffic.

#### **Small Urban Area (SUA)**

Small Urban Area; population centers of between 5,000 and 50,000 persons.

#### **State Implementation Plan (SIP)**

A plan mandated by the CAA and developed by each state that contains procedures to monitor, control, maintain, and enforce compliance with National Ambient Air Quality Standards (NAAQS).

#### **Six Year Highway Plan (SYP)**

A short-range highway plan of projects to be implemented by phase and funding levels for a six-year period in Kentucky. This plan is mandated by Kentucky Legislation and is updated and approved by the Kentucky Legislature every two years.

**Statewide Transportation Improvements Program (STIP)**

A short term transportation planning document covering at least a three year period and updated at least every two years. STIPs are created in conjunction with MPOs and the MPO's TIP is incorporated into the state's STIP. The STIP includes a priority list of projects to be carried out in each of the three years. Projects included in the STIP must be consistent with the long term transportation plan, must conform to regional air quality implementation plans, and must be financially constrained (achievable within existing or reasonably anticipated funding sources).

**Strategic Highway Corridor Network (STRAHNET)**

A federal highway designation of selected highways to be used for certain national emergencies.

**System Classification/Functional Classification**

The categorization of transportation facilities by their actual or expected use characteristics. The distinction is usually made on the basis of access vs. mobility, where lower order roadways are used primarily for access to individual land uses, while higher order roadways are used primarily for travel between towns or cities.

**Surface Transportation Program (STP)**

A categorical funding program included under ISTEA and continued under TEA-21 and SAFETEA-LU for transportation roadway projects. Funds may be used for a wide variety of purposes, including: roadway construction, reconstruction, resurfacing, restoration and rehabilitation; roadway operational improvements; capital costs for transit projects; highway and safety.

**I**

**Traffic Volume**

Number of vehicles passing a given point over a period of time.

**Transportation Enhancement Funds (TE)**

A federal funding category for projects that add community or environmental value to any active or completed transportation project. For instance, sidewalk, landscaping and bikeway projects are some of the ways in which a roadway could be enhanced.

**Transportation Equity Act of the 21st Century (TEA-21)**

A law enacted in 1998, TEA-21 authorized federal funding for transportation investment for the time period spanning fiscal year 1998 to fiscal year 2003. Approximately \$218 billion in funding was authorized, the largest amount in history, and is used for highway, transit, and other surface transportation programs.

**Transportation Improvement Program (TIP)**

Transportation Improvement Program is a document prepared by the MPO. It contains a prioritized list of projects within the metropolitan area for the next four years. This document identifies the projects for inclusion into the STIP. This document must be financially constrained and must be a direct subset of the area's Long-Range Transportation Plan.

**U**

**Unscheduled Project List (UPL)**



UPL-Unscheduled Project List (formerly Unscheduled Needs List, or UNL); a list, maintained by the KYTC Division of Planning of potential transportation projects, with project data derived from the KYTC Project Identification Form.

**Urban Area (UA)**

The Census Bureau defines “urban” for the 1990 census as comprising all territory, population, and housing units in urbanized areas and in places of 2,500 or more persons outside urbanized areas. More specifically, “urban” consists of territory, persons, and housing units in: 1.) Places of 2,500 or more persons incorporated as cities, villages, boroughs (except in Alaska and New York), and towns (except in the six New England States, New York, and Wisconsin), but excluding the rural portions of “extended cities;” 2.) Census designated places of 2,500 or more persons; and 3.) Other territory, incorporated or unincorporated, included in urbanized areas. Territory, population, and housing units not classified as urban constitute “rural.” This boundary is the line of demarcation for rural/ urban functional classification on roadways.

**V****Volume to Service Flow Ratio (V/SF)**

Volume to Service Flow ratio; a quotient showing the ratio of a facility’s actual vehicular traffic volume to its theoretical maximum potential vehicular traffic volume; a ratio higher than about 0.6 indicates traffic volumes are approaching congested conditions. This is also referred to V/C or Volume to Capacity ratio.