

THE CITY OF CRESCENT SPRINGS NKADD SERVICES

SERVICES FOR LOCAL GOVERNMENT

☒ How NKADD is serving your community

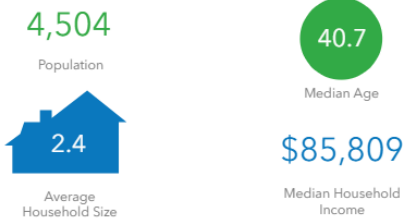
- ☒ Administrative and Organizational Staffing Services
 - ☒ Municipal Government League of Northern Kentucky
 - ☒ Northern Kentucky City/County Managers Association
 - ☒ Northern Kentucky Regional Ethics Authority
 - ☐ Northern Kentucky American Public Works Association
 - ☐ Northern Kentucky Public Entity Joint Health Insurance Board
 - ☐ Northern Kentucky Water Management Council
- ☒ GIS and Mapping Services
 - ☒ Centerlines
 - ☐ GIS Lending Library
- ☐ Grant Writing and Administration
- ☐ Human Resource Technical Assistance

☐ Opportunities for NKADD to serve your community

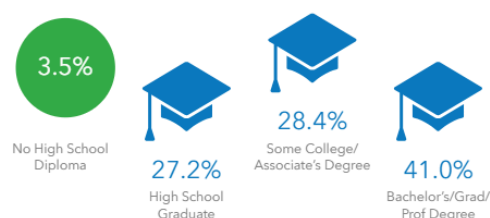
- ☒ Long-Range Regional Plans and Studies
 - The Comprehensive Economic Development Strategy (CEDS)
 - Hazard Mitigation Plan
 - Home for All: NKY Housing Strategies
 - Horizon Fund Food Insecurity Survey
 - Water Management Plan
- ☐ Procurement Assistance
- ☒ Salary Survey (on behalf of NKCCMA)
- ☒ Tax Rate Calculations
- ☒ Water and Wastewater Planning Liaison with KIA
 - Northern Kentucky Water District
 - Sanitation District No. 1

MAPPING SERVICES EXAMPLE

KEY FACTS



EDUCATION



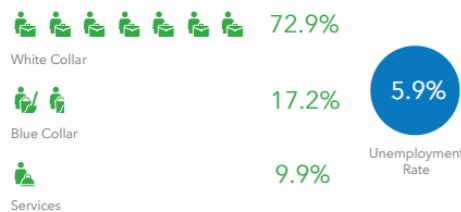
INCOME



BUSINESS



EMPLOYMENT



2025 Households by income (Esri)

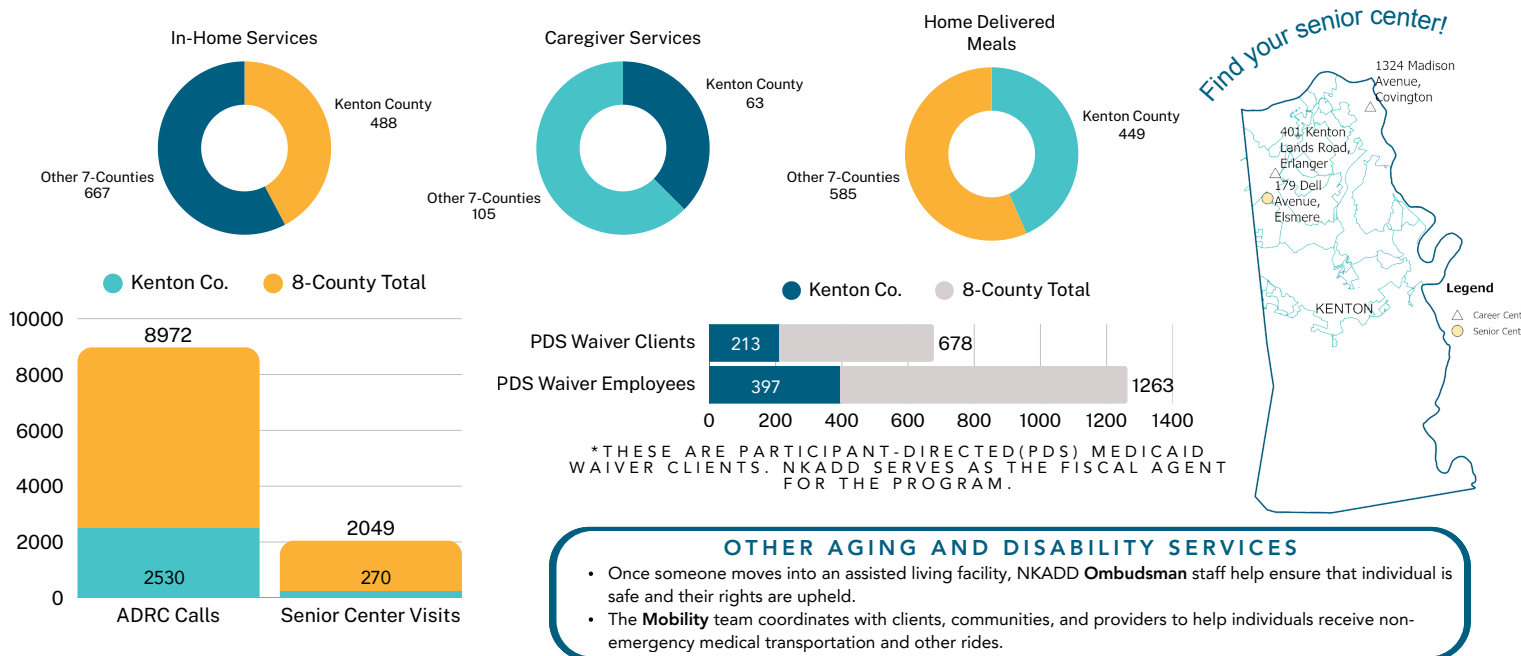
The largest group: \$75,000 - \$99,999 (21.4%)
The smallest group: <\$15,000 (1.9%)

Indicator ▲	Value	Diff	
<\$15,000	1.9%	-9.7%	
\$15,000 - \$24,999	9.7%	+1.3%	
\$25,000 - \$34,999	4.1%	-3.7%	
\$35,000 - \$49,999	8.7%	-3.8%	
\$50,000 - \$74,999	14.4%	-2.3%	
\$75,000 - \$99,999	21.4%	+8.7%	
\$100,000 - \$149,999	12.7%	-3.5%	
\$150,000 - \$199,999	7.0%	0	
\$200,000+	20.1%	+13.0%	

THE CITY OF CRESCENT SPRINGS NKADD SERVICES

AGING AND DISABILITY SERVICES

NKADD empowers older adults and individuals with disabilities to live independently in their homes by providing services and access to programs such as the Aging and Disability Resource Center (ADRC), Home Delivered Meals, In-Home and Caregiver Services, and Medicaid Waiver Assistance.



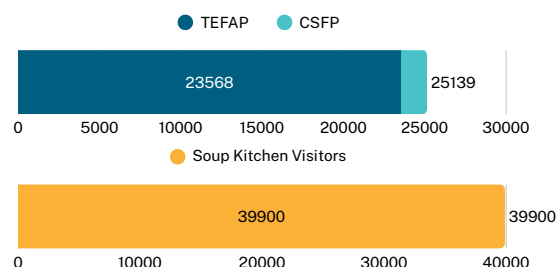
OTHER AGING AND DISABILITY SERVICES

- Once someone moves into an assisted living facility, NKADD **Ombudsman** staff help ensure that individual is safe and their rights are upheld.
- The **Mobility** team coordinates with clients, communities, and providers to help individuals receive non-emergency medical transportation and other rides.

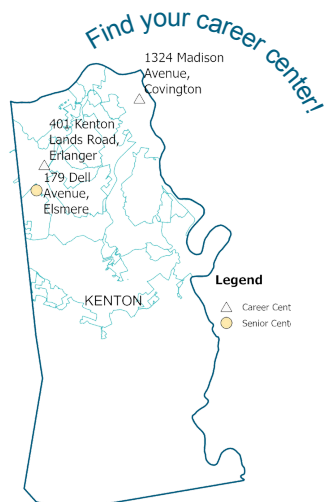
COMMODITIES

NKADD serves as the USDA Food Bank for the region's food pantries. Commodities, from The Emergency Food Assistance Program (TEFAP) and the Commodity Supplemental Food Program (CSFP), are distributed to individuals through partnerships with 42 food pantries, mobile pantries, and soup kitchens across the eight-county region.

TEFAP was utilized 23,568 times and CSFP was utilized 1,571 times in Kenton County during FY 2025



WORKFORCE DEVELOPMENT



NKADD's Workforce team provides strategic direction and supportive services to build and maintain a thriving economy. NKADD workforce programs include Youth First, Employee Connections, and Workforce Innovation and Opportunity Act (WIOA) programs and initiatives in addition to partnerships such as NKY Works and Kentucky Career Centers.

