

THE CITY OF SPARTA NKADD SERVICES

SERVICES FOR LOCAL GOVERNMENT

☒ How NKADD is serving your community

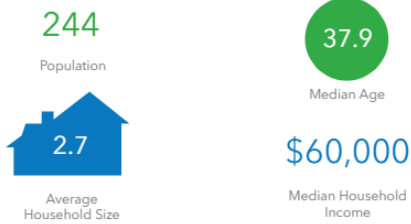
- ☒ Administrative and Organizational Staffing Services
 - ☒ Municipal Government League of Northern Kentucky
 - ☐ Northern Kentucky City/County Managers Association
 - ☐ Northern Kentucky American Public Works Association
 - ☐ Northern Kentucky Public Entity Joint Health Insurance Board
 - ☐ Northern Kentucky Regional Ethics Authority
 - ☐ Northern Kentucky Regional Transportation Committee
 - ☐ Northern Kentucky Water Management Council
- ☒ GIS and Mapping Services
 - ☒ Centerlines
 - ☐ GPS Lending Library
- ☐ Grant Writing and Administration
- ☐ Human Resources Technical Assistance

☐ Opportunities for NKADD to serve your community

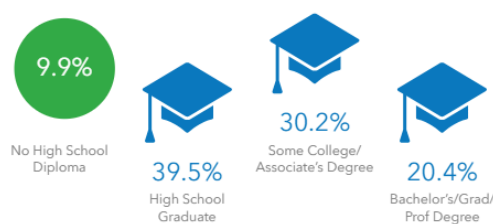
- ☒ Long-Range Regional Plans and Studies
 - The Comprehensive Economic Development Strategy (CEDS)
 - Hazard Mitigation Plan
 - Home for All: NKY Housing Strategies
 - Horizon Fund Food Insecurity Survey
 - Water Management Plan
- ☐ Procurement Assistance
- ☐ Salary Survey (on behalf of NKCCMA)
- ☐ Tax Rate Calculations
- ☒ Water and Wastewater Planning Liaison with KIA
 - Gallatin County Water District
 - Carrollton Utilities

MAPPING SERVICES EXAMPLE

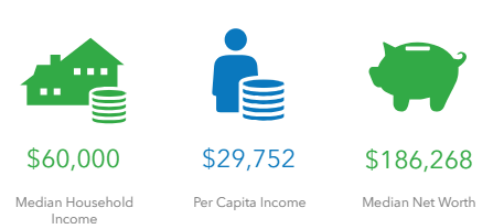
KEY FACTS



EDUCATION



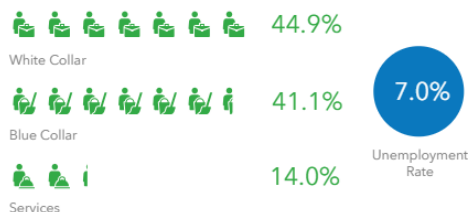
INCOME



BUSINESS



EMPLOYMENT



2025 Households by income (Esri)

The largest group: \$100,000 - \$149,999 (20.2%)
The smallest group: \$200,000+ (4.5%)

Indicator ▲	Value	Diff	
<\$15,000	9.0%	-2.6%	
\$15,000 - \$24,999	6.7%	-1.7%	
\$25,000 - \$34,999	15.7%	+7.9%	
\$35,000 - \$49,999	11.2%	-1.3%	
\$50,000 - \$74,999	12.4%	-4.3%	
\$75,000 - \$99,999	12.4%	-0.3%	
\$100,000 - \$149,999	20.2%	+4.0%	
\$150,000 - \$199,999	6.7%	-0.3%	
\$200,000+	4.5%	-2.6%	

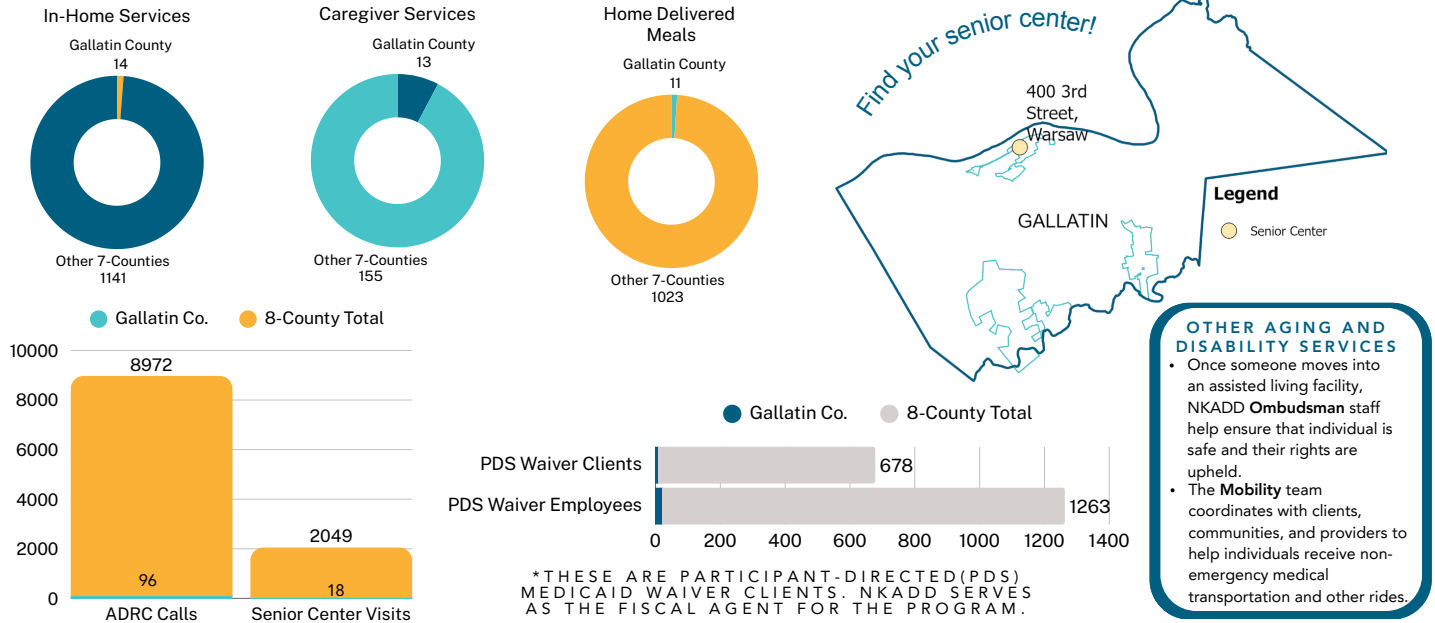
Bars show deviation from Kentucky ▼

THE CITY OF SPARTA

NKADD SERVICES

AGING AND DISABILITY SERVICES

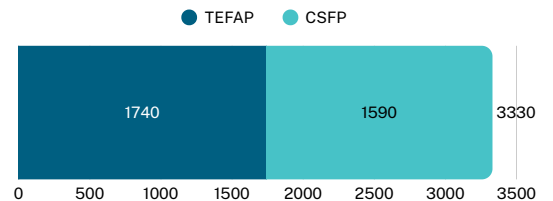
NKADD empowers older adults and individuals with disabilities to live independently in their homes by providing services and access to programs such as the Aging and Disability Resource Center (ADRC), Home Delivered Meals, In-Home and Caregiver Services, and Medicaid Waiver Assistance.



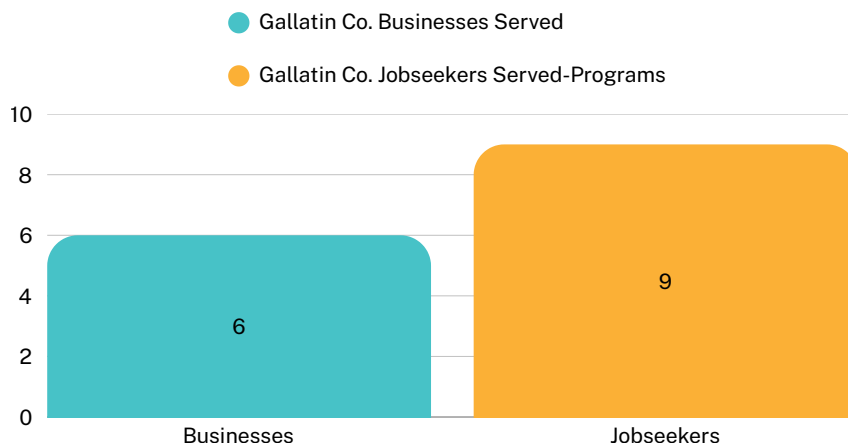
COMMODITIES

NKADD serves as the USDA Food Bank for the region's food pantries. Commodities, from The Emergency Food Assistance Program (TEFAP) and the Commodity Supplemental Food Program (CSFP), are distributed to individuals through partnerships with 42 food pantries, mobile pantries, and soup kitchens across the eight-county region.

TEFAP was utilized 1,740 times and CSFP was utilized 1,590 times in Gallatin County during FY 2025



WORKFORCE DEVELOPMENT



NKADD's Workforce team provides strategic direction and supportive services to build and maintain a thriving economy. NKADD workforce programs include Youth First, Employee Connections, and Workforce Innovation and Opportunity Act (WIOA) programs and initiatives in addition to partnerships such as NKY Works and Kentucky Career Centers.